



OKLAHOMA Workers' Compensation Commission

2021 ANNUAL REPORT



OKLAHOMA WORKERS' COMPENSATION COMMISSION

1915 N. STILES AVE · OKC, OK · 73105 · (405) 522-3222 · WCC.OK.GOV

Tulsa office · 201 West 5th Street · Tulsa, Oklahoma 74103 · (918) 295-3732

Chairman Jordan K. Russell · Commissioner Megan Tilly · Commissioner Scott Biggs

Executive Director Hopper Smith

June 30, 2022
Oklahoma City, OK

The Honorable Kevin Stitt
Governor of Oklahoma

The Honorable Greg Treat
President Pro Tempore of the Oklahoma Senate

The Honorable Charles McCall
Speaker of the Oklahoma House of Representatives

Governor Stitt, President Pro Tempore Treat, Speaker McCall, and Legislators:

It is my privilege to submit to you the 2021 Annual Report of the Oklahoma Workers' Compensation Commission.

This publication is issued by the Oklahoma Workers' Compensation Commission as required by 85A O.S. §§ 25 and 101, and is published at the following website: <https://www.ok.gov/wcc/>. This publication has been submitted to the Oklahoma Publications Clearinghouse in compliance with 65 O.S. § 3-114.

Respectfully,


Chairman Jordan K. Russell

Oklahoma Workers' Compensation Commission

Table of Contents

Introduction and General Information

Introduction	1
Commissioners' Duties.....	3-4
Biographical Information	5-9
Administrative Divisions & Organizational Chart	10-11
CaseOK Filing System Update	12

Charts and Graphs

Appeals Per Filing.....	13
Total Case Filings and Claims Per 100 Employed.....	14
Disposition Trends.....	15
Total Workers' Compensation Premiums.....	16
Commission Filings Distributed by Cause of Injury	17

Appendices

Appendix 1—Maximum Weekly Compensation Rates	18
Appendix 2—Workers' Compensation Premium Written in Oklahoma.....	19-27
Appendix 3—Filings by Part of Body, Distributed by Gender.....	28-30
Appendix 4—Filings by Nature & Cause of Injury	31-33
Appendix 5—Filings by NAICS Sector	34-38
Appendix 6—Orders of Administrative Law Judge.	39-41
Appendix 7&8—Administrative Law Judge Case Settings	42
Appendix 9—WCC Fiscal Year 2021 Budget	43



Introduction

In 2013, the Oklahoma Legislature reformed the workers' compensation system through Senate Bill 1062 by establishing the Administrative Workers' Compensation Act (AWCA). The AWCA created the Workers' Compensation Commission (WCC), which became fully operational effective February 1, 2014. This report reviews the effort and results of the WCC in calendar year 2021.

The statistics reported here reflect the Commission's seventh full year of activity. The number of cases filed (represented by CC-Form 3 filings) rose slightly from 2020 to 2021. Overall, filings continue to be significantly lower than those of the Workers' Compensation Court in the Court's last year of reporting.

The mission of the Workers' Compensation Commission is to serve the public by providing a fair and unbiased forum for the hearing and efficient processing of worker injury claim disputes, to evaluate and administer own-risk applications, and to ensure statutory compliance of those employers required to provide workers' compensation coverage.

The workers' compensation system exists to assist the injured worker in his or her ability to return to work with the most limited interruption to work and family life as possible. The goals of the reform were to provide for injured workers, while reducing costs in the overall system, thereby encouraging job growth in Oklahoma.

To fulfill its mission, the Commission conducts a multitude of functions. The Commission processes requests and notices for claims, settlements, hearings, trials, dockets, and orders. It also receives notices and filings, certifies documents, prepares, and transmits records on appeal, and provides public access to Commission files and records, as authorized by law. To facilitate compliance, the Commission maintains worker's compensation insurance proof of coverage records for employers, and it regulates third-party administrators. The Commission also provides counseling services to its stakeholders.

Our mission is faithfully carried out by a dedicated team of 47 employees in Oklahoma City and Tulsa. A quarter of our staff has nearly 20 years of experience in serving the State's workers' compensation needs. Our Agency boasts a 92% employee engagement score and a 94% job satisfaction score. These scores represent some of the highest scores among all state agencies according to the 2021 Oklahoma State Employee Engagement Survey. This further illustrates the pride our staff takes in serving the needs of their fellow Oklahomans.

The core of our staff are the Administrative Law Judges (ALJ) who seek to move cases quickly and efficiently through the case disposition process. In 2021, the ALJs issued a total of 14,208 orders (see Appendix 6) in 26,745 case settings (see Appendix 7). Through their diligent efforts, cases are brought to a timely resolution. As seen in the *Appeals Per New Filing Chart* (pg. 12) less cases are going to appeals under our ALJs than in the previous Court system. This can be interpreted as a higher degree of satisfactory outcomes for all parties in cases before the Commission.



The Commission manages a mediation program with the goal of reducing the need for cases to go through the hearing process. Our mediators help both claimants and respondents reach a mutually satisfactory conclusion to disputes. As shown in the Disposition Trends Graph on pg. 14 most of our cases find resolution with out needing to go to trial. Our Administrative Law Judges are further empowered to order cases into the mediation process when they see a case could presumably be settled outside of a hearing.

To provide more efficient services to the public, the Commission is continuing its modernization efforts to replace its antiquated case system, the Workers' Compensation Information System (WCIS.) The new system, CaseOK, currently features numerous improvements in staff work-flow and public access. It also facilitates the Commission's application process for Self-Insured Employers, Group Self- Insurance Associations, and Third-Party Administrators, as well as the filing process for the Affidavit of Exempt Status. The first phase of the project is complete, and the Commission is continuing development in the second phase of the project in 2022. CaseOK's new electronic features will provide digital solutions and services to help the Commission, claimants, practitioners, and other stakeholders operate more efficiently.

A top priority for the Commission has been to work closely and collaborate with all agencies governed by Title 85A. For example, the Commission is partnering with the Court of Existing Claims to share costs of updating the old court filing system, and the Commission has offered the services and expertise of the agency's CFO to help the MITF better manage its funding mechanisms and budget. The Commission stands ready to assist in any way to ensure workers and businesses have access to a fair and impartial workers' compensation system.

The WCC's spirit of teamwork and cooperation extends beyond the agencies included in Title 85A. The Commissioners feel deeply that the WCC is a part of the larger mission of every state agency to bring about better service to all Oklahomans. That is why, when the newly created OMES Civil Service Division ("CSD") was looking for courtroom space to hold hearings, the Commission immediately sought opportunities to assist. Beginning this year, the WCC will begin sharing court room space with the Civil Service Division, as needed, to help the CSD carryout its vital mission to state employees and agencies.

The Commission is working diligently with partners around the state to educate new business owners on the importance of being in compliance with Title 85A. Our Compliance Division is ready to educate and inform the many new businesses opening across our state as the economy recovers from the global pandemic.

Looking ahead to the future, The Commission is concerned by projected revenue assessments authorized in 85A O.S. § 122 falling below the total statutory appointment by FY2024. As a funding mechanism the Commission is funded by a percentage total workers' compensation premiums. As premiums go down due to the reduced costs of our workers' compensation system, so too does the assessment revenue. These assessment revenues also fund the Court of Existing Claim and the Multiple Injury Trust Fund.

The WCC remains committed to serving Oklahomans with the best public service that the articles of Title 85A empower us to give. Standing up a brand new state agency is no small feat. Many of our staff members have been with the agency since its beginning, and the accomplishments of this agency over the past seven and a half years are only possible because of the hard work, dedication, and experience of our valued employees.



Commissioners' Duties

The Workers' Compensation Commission is composed of three full-time Commissioners, appointed by the Governor and confirmed by the State Senate to serve staggered terms. The Commissioners are state officers precluded from having any other employment except as may be permitted by law. The Chair of the Commission is appointed by the Governor from among the Commission members.

Commissioners perform adjudicative, administrative, and regulatory functions. Those functions include: (1) hearing appeals from decisions and awards of the agency's Administrative Law Judges (ALJs); (2) promulgating rules necessary for the administration and operation of the Commission; (3) regulating employers which self-insure their workers' compensation obligations; (4) maintaining the Commission's Vocational Rehabilitation Registry and lists of Independent Medical Examiners and Medical Case Managers; (5) managing the agency's budget; (6) interacting regularly with the Self-insurance Guaranty Fund Board and workers' compensation advisory bodies to the Commission; (7) participating in educational programs, including an annual, Commission-sponsored workers' compensation conference; and (8) such other matters necessary for administration and operation of the agency.

Appellate Process

The three Commissioners act as an appellate tribunal (known as an "*en banc* panel") in appeals from decisions of the Commission's ALJs. Unlike most other administrative agencies whose decisions are appealed to the district court, decisions of the panel are appealed directly to the Oklahoma Supreme Court. The law does not allow direct appeals from a ruling by an ALJ to the Supreme Court.

Panel review by the Commissioners involves examining the trial record, reviewing written arguments required to be submitted by the parties, hearing the parties' oral arguments, and deliberating confidentially as permitted by law to render a decision on the appeal. A just and fair consideration of each appeal may require hours of study and demands careful consideration and preparation. The trial record may be quite lengthy depending upon the disputed issues and the documentary and medical evidence submitted. Each Commissioner is responsible for reviewing all authority cited in the written arguments to evaluate proper interpretation and application of the law. The panel of Commissioners deliberates confidentially to discuss a case before an appeals hearing and after an oral argument, before voting and announcing a decision.

The panel may reverse, modify, or affirm decisions or awards made by the Commission's ALJs, or remand the matter to the ALJ for the purpose of taking additional evidence. The decision is pronounced by written order voted upon publicly. In 2021, the Commission heard 53 appeals. Appeals are set promptly for consideration upon completion of the record and receipt of written arguments from the parties as required by Commission rules.



Self-insurance Regulation

In Oklahoma, an employer may satisfy its workers' compensation obligations by qualifying as a self-insurer, either an individual self-insured employer or as part of an approved group association. To self-insure, an applicant must furnish satisfactory proof to the Commission of its financial ability to pay compensation from its own pocket and post an established amount of security (usually a letter of credit or a surety bond) with the Commission to ensure the employer's performance of its self-insurance obligations. Currently, the Commission regulates 168 individual self-insured employers and 6 group self-insurance associations.

The Commissioners' self-insurance regulatory functions include: (1) taking necessary action upon notice of a self-insured's failure or inability to pay its workers' compensation obligations, including bankruptcy or other insolvency proceedings; (2) reviewing requests to reduce or release a security deposit posted with the Commission after an individual self-insured employer voluntarily leaves self-insurance; and (3) reviewing requests to release surplus funds to member employers of a group self-insurance association. These issues require the Commissioners to consider the impact of legal filings, closely review financial statements and other documents, evaluate existing and potential injury losses, and assess any anticipated monetary deficits.

The Commissioners' careful oversight of regulatory issues helps maintain the integrity of self-insurance as an alternative to workers' compensation insurance coverage, and minimizes resort to the Self-insurance Guaranty Fund (SIGF). The SIGF is a statutorily-created fund supported by assessments to address an impaired self-insured's workers' compensation obligations in the event the security posted with the Commission is not sufficient to pay all claims.

The Permitting Services Division assists the Commissioners in the regulation of self-insureds through a variety of activities, including but not limited to, processing new and renewal applications for self-insured employers and group self-insurance associations. This process involves an robust review of the financial statements submitted along with each application to ensure the financial soundness of each applicant. The Division is also responsible for calculating various rates for assessments imposed by Title 85A of the Oklahoma Statutes.



Commissioners



JORDAN K. RUSSELL

Chairman Jordan K. Russell joined the Commission after serving three legislative sessions as policy director and counsel to former Oklahoma Speaker of the House Jeffrey W. Hickman. Prior to his time at the State Capitol, Chairman Russell had a successful law practice in the downtown Oklahoma City office of Gungoll, Jackson, Box & Devoll, P.C.

Chairman Russell also previously worked as a legislative assistant to Oklahoma's U.S. Congressman Frank D. Lucas in his Washington, D.C. office where he worked on issues involving healthcare, labor, social security and disability, and ERISA.

Chairman Russell was appointed to the Oklahoma Workers' Compensation Commission by Governor Mary Fallin effective October 4, 2016, and was reappointed to the Commission by Governor Kevin Stitt to a term ending in August 2025. Chairman Russell was appointed to the position of Chairman of the Workers' Compensation Commission June 1, 2021, by Governor Kevin Stitt.

ADMISSIONS

- Supreme Court of Oklahoma
- U.S. District Court for the Western District of Oklahoma
- U.S. District Court for the Eastern District of Oklahoma
- U.S. District Court for the Northern District of Oklahoma

EDUCATION

- J.D., University of Oklahoma College of Law, Order of the Coif, Dean's List
- B.S., Oklahoma State University, Major: Agricultural Economics, *Magna Cum Laude*, Top Graduate of College of Agricultural Sciences and Natural Resources

CIVIC INVOLVEMENT AND LEADERSHIP

- Crossings Community Church
- Sirloin Club of Oklahoma – Board of Directors
- PCAA and Friday Night Lights - Volunteer Youth Sports Coach
- National and Oklahoma FFA Alumni Association – Lifetime Member
- Oklahoma State University Alumni Association – Lifetime Member



Commissioners



MEGAN R. TILLY

Before her appointment to the Commission, Commissioner Tilly most recently served as Chief of the Multi-County Grand Jury Unit of the Oklahoma Attorney General's office. The grand jury investigates and prosecutes crimes across the state, including public corruption, white collar crime, and fraud. She assisted the Workers' Compensation, Insurance, and Social Security Fraud Unit of the attorney's general's office in criminal fraud investigations through legal research and counsel. Previously, Commissioner Tilly worked in the District Attorney's office as an assistant district attorney in the Ninth District, handling all felony drug cases in Payne County and prosecuting all types of felonies in Logan County.

Commissioner Tilly was appointed to the Oklahoma Workers' Compensation Commission by Governor Mary Fallin effective August 28, 2017.

ADMISSIONS

- Supreme Court of Oklahoma
- U.S. District Court for the Western District of Oklahoma

EDUCATION

- JD, University of Oklahoma College of Law
- BS, Washington and Lee University, Major: Political Science & History.

CIVIC INVOLVEMENT AND LEADERSHIP

- Rotary Club of Oklahoma City, Member.
- Lawyer's chapter of the Federalist Society of Oklahoma City, Member.
- Junior League of Oklahoma City, Member.
- Christ The King Catholic Church
- Central Oklahoma Humane Society, Board Member.



Commissioners



Scott Biggs

Commissioner Biggs joined the Commission after serving as the State Executive Director for the Farm Service Agency within the USDA. Prior to his service with the USDA, Commissioner Biggs was an elected member of the Oklahoma House of Representatives. At the Capitol, Scott served on a variety of committees and in several leadership roles. Much of his work was focused on both agriculture and victims' issues. Scott was the leading voice for State Question 794 which placed victims' rights in the State Constitution. Before his time at the State Capitol, Scott ran a private legal practice and worked in several district attorneys' offices around the state.

Commissioner Biggs currently serves as an officer in the Oklahoma Air National Guard and is assigned to the 138th Fighter Wing legal office in Tulsa, Oklahoma. He was recently recognized with the Patriot Award for his support and cooperation of fellow members in the Guard, Reserves, and veterans of military service in their employment opportunities.

Governor Kevin Stitt appointed Commissioner Biggs to a six-year term with the Oklahoma Workers' Compensation Commission effective August 26, 2021.

ADMISSIONS

- Supreme Court of Oklahoma
- United States District Court for the Western District of Oklahoma
- United States Court of Appeals for the Armed Forces
- United States Air Force Court of Criminal Appeals

EDUCATION

- J.D., University of Oklahoma College of Law
- B.S., Oklahoma State University, Major: Agricultural Economics

CIVIC INVOLVEMENT AND LEADERSHIP

- St. Francis of Xavier Catholic Church
- Oklahoma State University Alumni Association



Executive Director



Executive Director Hopper Smith manages and develops all operations and regulatory divisions of the WCC. Additionally, the Executive Director acts as a liaison between the three commissioners and can represent the Commission to other state agencies. Over the last decade, Hopper served in a number of roles including: Director of Government Relations for Chesapeake Energy; President of OCPA; and Director of Public Affairs for Devon Energy. In 2012, Hopper was promoted to Brigadier General and assigned as Assistant Adjutant General, Oklahoma National Guard. Hopper received his B.S. in Geology from Oklahoma State University in 1986. He earned an M.S. in Strategic Intelligence from National Defense Intelligence College at the Defense Intelligence Agency in 2007. He earned his second M.S. in Strategic Studies from the U.S. Army War College in 2010.

Administrative Law Judges



Judge T. Shane Curtin is the Chief Administrative Law Judge of the Workers' Compensation Commission. Prior to becoming an ALJ, Judge Curtin spent 23 years in private practice specializing in workers' compensation defense. Judge Curtin obtained his Juris Doctorate from the University of Oklahoma in 1991. Judge Curtin earned his undergraduate degree in Human Resource Management from The University of Central Oklahoma in 1988.



Judge Tara Inhofe graduated from Tulsa University with a Bachelor of Arts and obtained her Juris Doctorate from Tulsa University Law School. Judge Inhofe's primary practice area has been workers' compensation. She has worked both as a claimant attorney and respondent attorney. Before being appointed in May 2014, she was Staff Counsel for The Hartford.



Judge Michael T. Egan graduated from the University of Oklahoma in 1980 with a Bachelor of Arts degree in Journalism and from Oklahoma City University in 1984 with a Juris Doctorate. He is a former managing attorney of the Oklahoma State Insurance Fund. Judge Egan is a member of the Oklahoma Bar Association and the Oklahoma Bar Association Workers' Compensation Section.



Administrative Law Judges



Judge P. Blair McMillin received her bachelor's degree in Journalism and Public Relations from Oklahoma State University with honors. Judge McMillin graduated from Oklahoma City University School of Law, Cum Laude. In private practice, Judge McMillin specialized in workers' compensation in general litigation and, claimant practice. Judge McMillin is a member of the Oklahoma Trial Lawyers Association, Oklahoma County Bar Association, and Workers' Compensation Section. Her professional licenses include the Oklahoma State Bar, the United States District Court, Western District of Oklahoma, the Supreme Court, and all other Courts of the Chickasaw Nation.



Judge Molly H. Lawyer received her Bachelor of Science in Political Science from the University of Oklahoma in 2005. She then attended the University of Tulsa Law School and received her Juris Doctorate in 2008. She practiced as a workers' compensation defense attorney representing insurance companies and self-insured employers in Oklahoma from 2008 until 2017. She served as an executive board member and Chairperson for 2012-2013 of the Oklahoma Bar Association Workers' Compensation Section. She was also the 2010-2011 Chairperson of the Tulsa County Bar Association Young Lawyers Division as well as a previous executive board member for The Tulsa Women Lawyers Association. She was appointed an Administrative Law Judge for the Oklahoma Workers' Compensation Commission in September of 2017.



Judge John L. Blodgett received his bachelor's degree in Elementary Education from Cameron University in Lawton, Oklahoma, earned his Juris Doctorate from the University of Oklahoma School of Law. Judge Blodgett has over 20 years of experience practicing law in Oklahoma. For the last ten years of his legal career, he has practiced in workers' compensation law, working with both respondents and limited work with claimants. Judge Blodgett's professional licenses include the Oklahoma State Bar, the United States District Courts for Western, Eastern, and Northern Districts, as well as the United States Court of Appeals for the Tenth Circuit.



Additional Administrative Divisions

Records Division – Maintains the Commission’s file system, consisting of records from 2014 to present, and support docketing personnel. The Records Division assists the public with records requests and copy fees.

Compliance Department – Enforces 85A O.S. § 38, which requires employers to secure compensation, either through traditional workers’ compensation insurance coverage, or through self-insurance. The Division is run by a managing attorney who oversees four investigators, one of whom offices in Tulsa.

Order Writing Division – Assists the ALJs and Commissioners in drafting and finalizing orders in all cases.

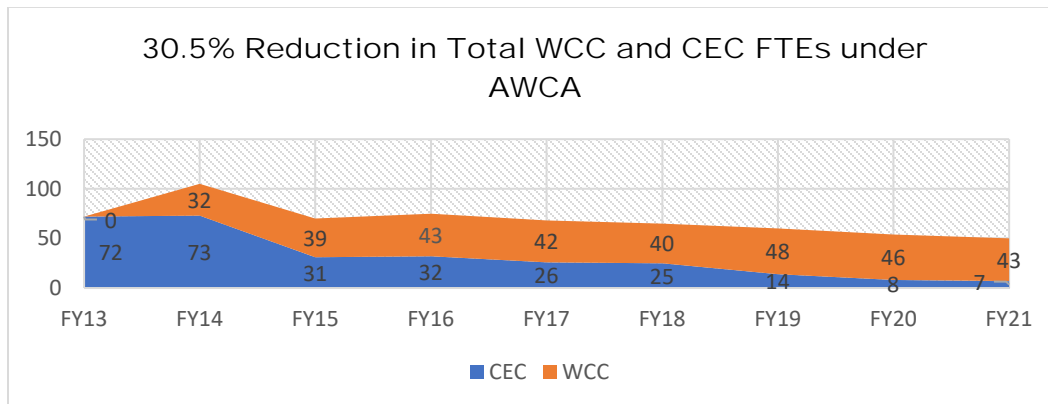
Counselors Division – Provides information about the workers’ compensation process, rules, and law to injured workers, employers, insurance carriers, medical providers, and other members of the public.

Permitting Services – Performs a variety of regulatory functions, including processing new and renewal applications for self-insured employers and group self-insurance associations, calculating rates for assessments imposed by Title 85A of the Oklahoma Statutes, and issuing Certificates of Non-Coverage.

Docketing – Sets hearings and prehearing conferences, notifies parties of hearing dates, and manages administrative law judges’ dockets.

Case Commencement – Processes and files incoming Form-3 filings for workers’ compensation claims.

Administration/Communications Division – The Commission relies on its Administrative Division to perform several different important agency functions. Title 85A O.S. § 109(D) requires the Commission to develop an annual training program to train and educate stakeholders about the new workers’ compensation system.

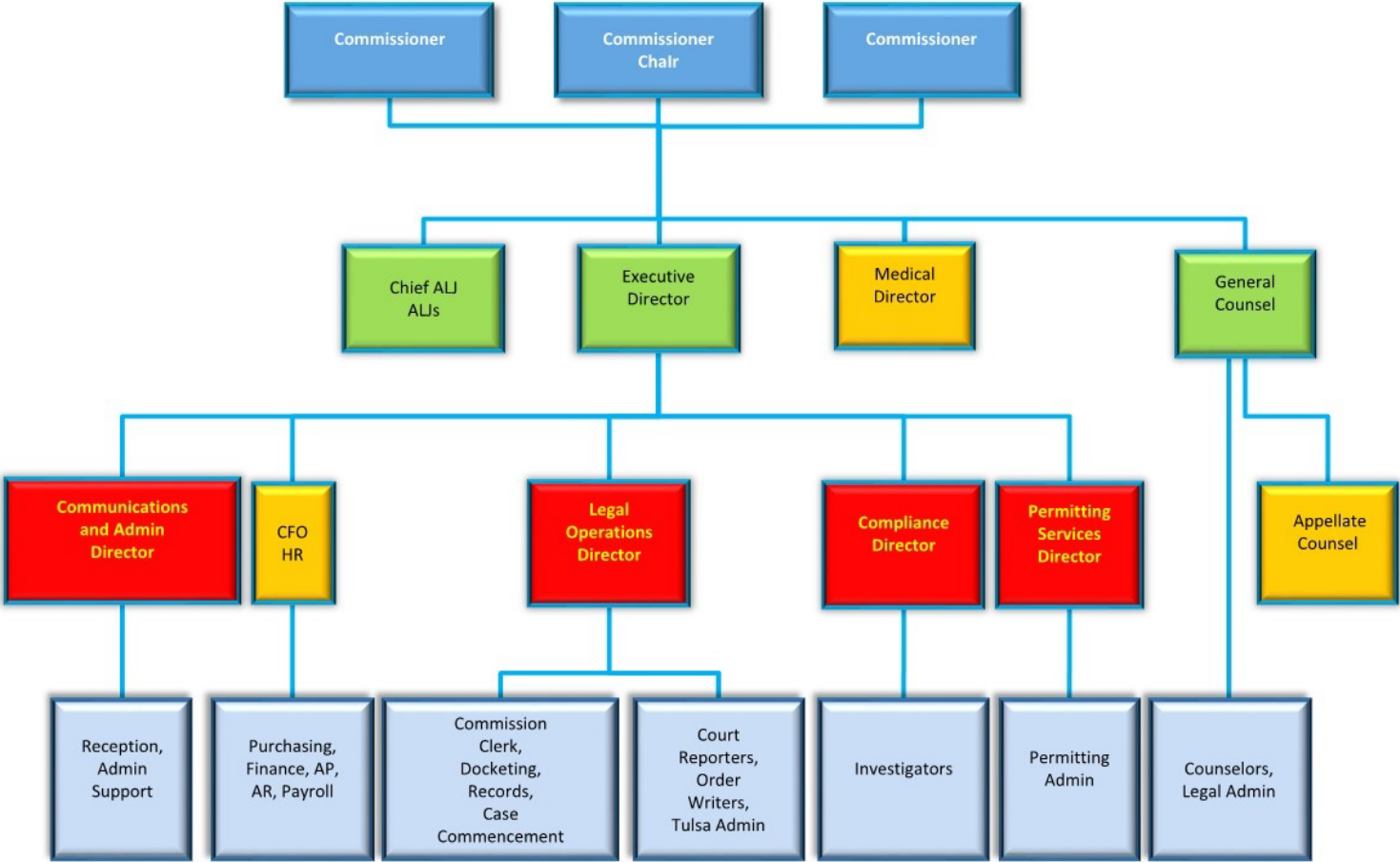


The chart above shows increased efficiency in FTE's to administer the State's workers' comp system and a decrease in cases since the adoption of AWCA in 2013. The WCC and CEC have been able to manage the State's worker's compensation system with 30.5% fewer employees.



WCC ORGANIZATIONAL CHART

Oklahoma Workers' Compensation Commission Organization Chart





DIGITAL TRANSFORMATION UNDERWAY AT WCC:

CaseOK

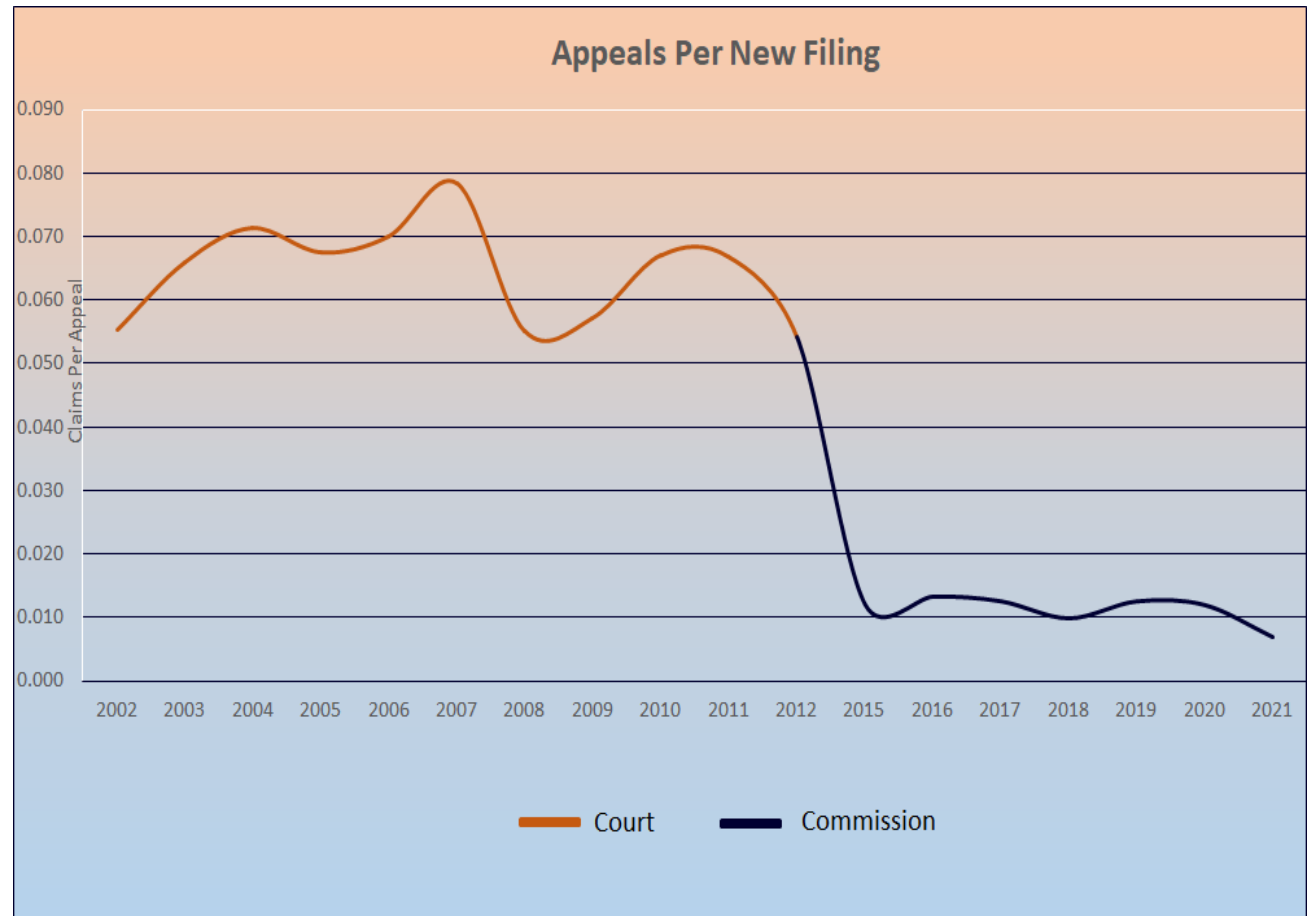
The Commission is nearing the finish line in its effort to bring all of its services online under one software system. The new system, dubbed “CaseOK,” has been designed and built from the ground up by Commission staff and a local software developer. The system follows the Commission’s work flow creating staffing efficiencies, managing data and giving the Commission’s customers the ability to conduct business anywhere there is internet access. CaseOK will bring selected WCC and CEC records to a searchable online database, allow online submission of permit applications and fees, as well as delivery of documents. CaseOK will allow injured workers and attorneys to electronically file and receive orders and documents in administrative cases. The development of CaseOK has been fully funded by WCC savings and efficiencies from its existing revenue along with contribution by the CEC for its modules.

Permitting Applications <input checked="" type="checkbox"/> Online	NCCI - Proof of Coverage Inquiry Database <input checked="" type="checkbox"/> Online	Case Commencement <input checked="" type="checkbox"/> Online
Case Docketing <input checked="" type="checkbox"/> Online	Case Orders <input checked="" type="checkbox"/> Online	Case Adjudication <input checked="" type="checkbox"/> Online
Point of Sale/Finance <input checked="" type="checkbox"/> Online	Public Search <input checked="" type="checkbox"/> Online	External User Filing (Coming 2022)
Joint Petition Settlement Processing (Coming 2022)	CEC Data Migration (Coming 2023)	Automation of Independent Medical Examiner, Counseling and Compliance Processes (Coming 2023)



The chart on the right shows appeals per claim filing. Since the implementation of the AWCA and the creation of the Commission, the number of appeals per claim have decreased dramatically.

Appeals are costly for both the claimant and the respondent. For the claimant who ultimately succeeds, in their case he or she must wait significantly longer for benefits. Even a delay of only a few weeks to docket the appeal can be significant for an injured worker who is struggling financially and unable to work.¹

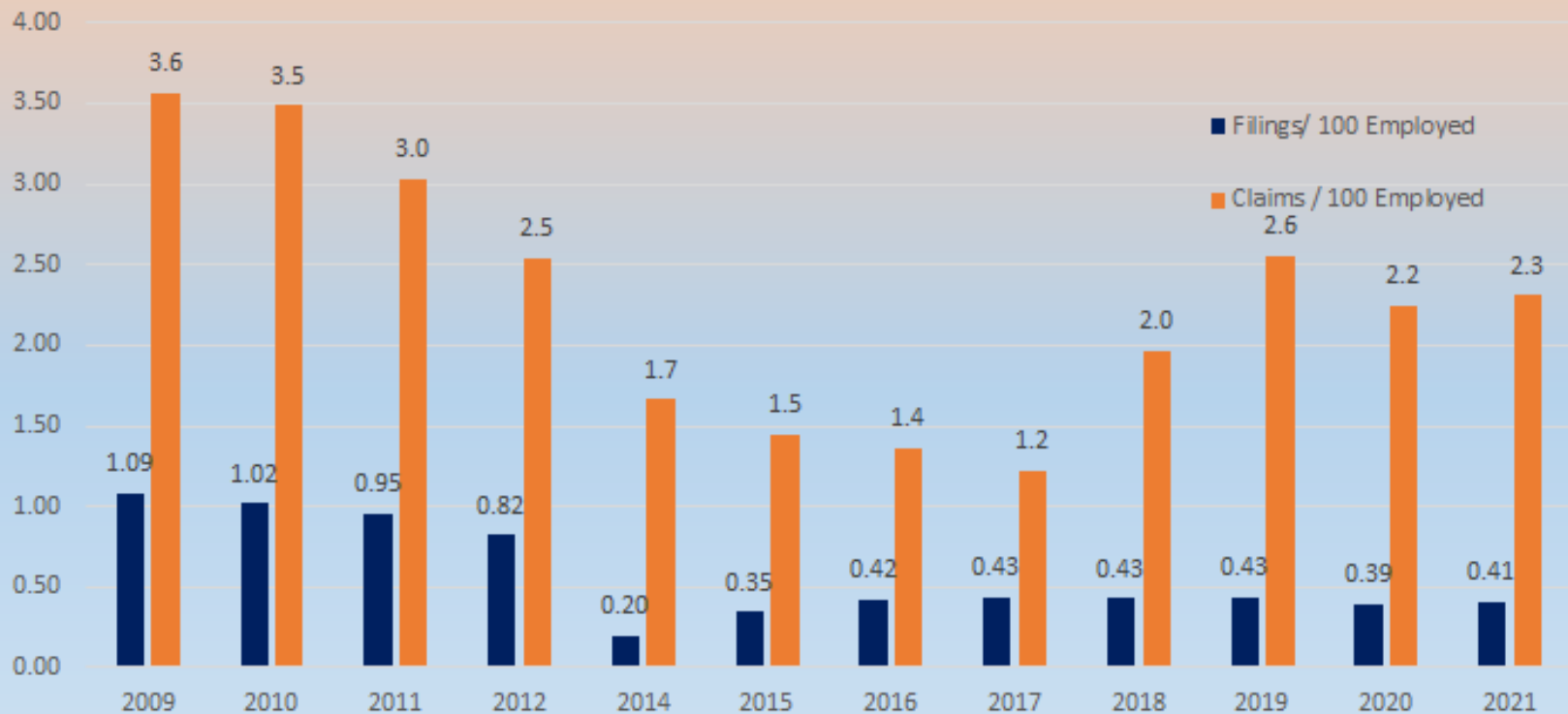


¹ 2013 Data is omitted because the Workers' Compensation Court did not release an Annual Report for that year. 2014 data is omitted because the Commission had not yet been in operation for a significant period of time, so it is not representative of a typical year. Total Commission claim filings in 2014 were 3,541, and there were no appeals filed with the Commission during That year. The Court last released an Annual Report for 2012.



This chart shows the total number of cases filed and claims per 100 people employed from 2009 to 2021. After the creation of the Workers' Compensation Commission, the number of filed cases dropped by nearly one half. In 2018 the Commission adopted EDI for Insurance claims reporting. The increased efficiency in claims reporting can be seen in the abrupt rise in claims counted from 2018 onwards.

Filings and Claims Per 100 Employed

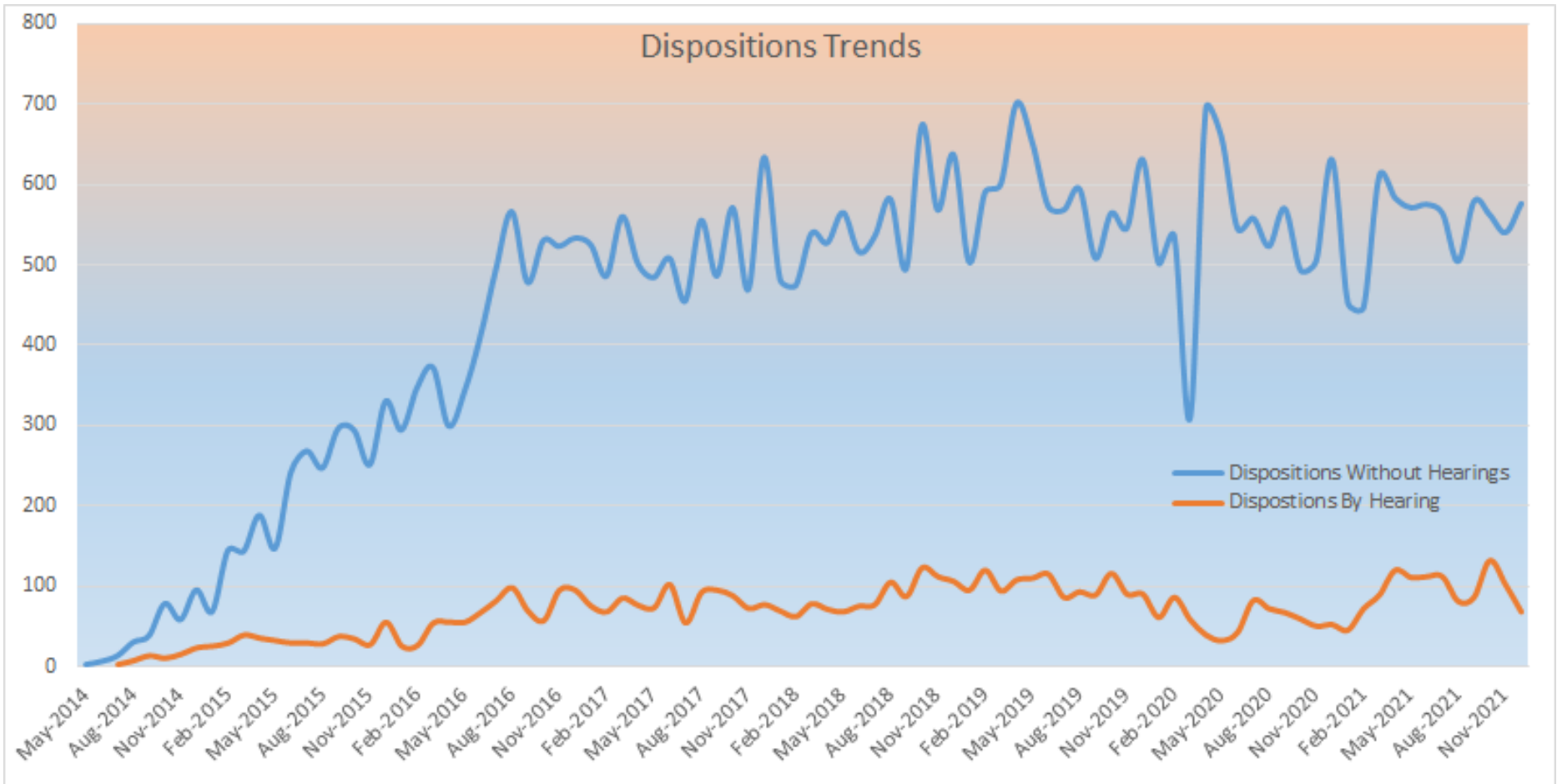


2013 Data is omitted because the Workers' Compensation Court did not release an Annual Report for that year. 2014 data is omitted because the Commission had not yet been in operation for a significant period of time, so it is not representative of a typical year. Total Commission claim filings in 2014 were 3,541 and there were no appeals filed with the Commission during that year. The Court last released an Annual Report for 2012.

2021 WCC Annual Report

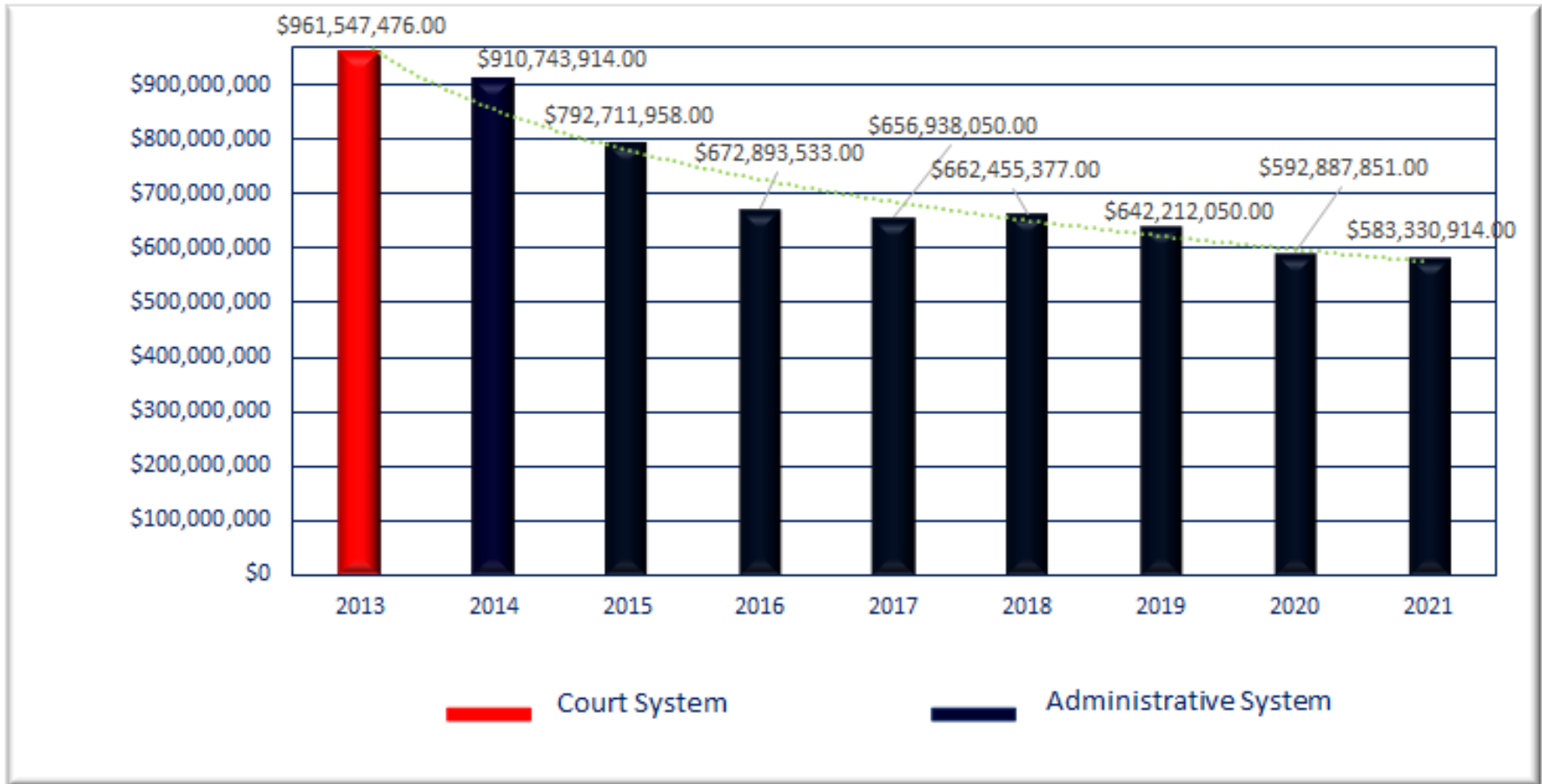


One of the WCC's most important goals is to dispose of cases in a timely manner to help injured workers return to work and ensure they receive the compensation owed to them by law. Often, formal hearings are necessary to accomplish this goal, but more often, disputes can be settled without the time-consuming process the hearing poses. This chart shows dispositions of cases dating back to the Commission's inception, and demonstrates that the vast majority of cases are resolved without the need for a hearing.





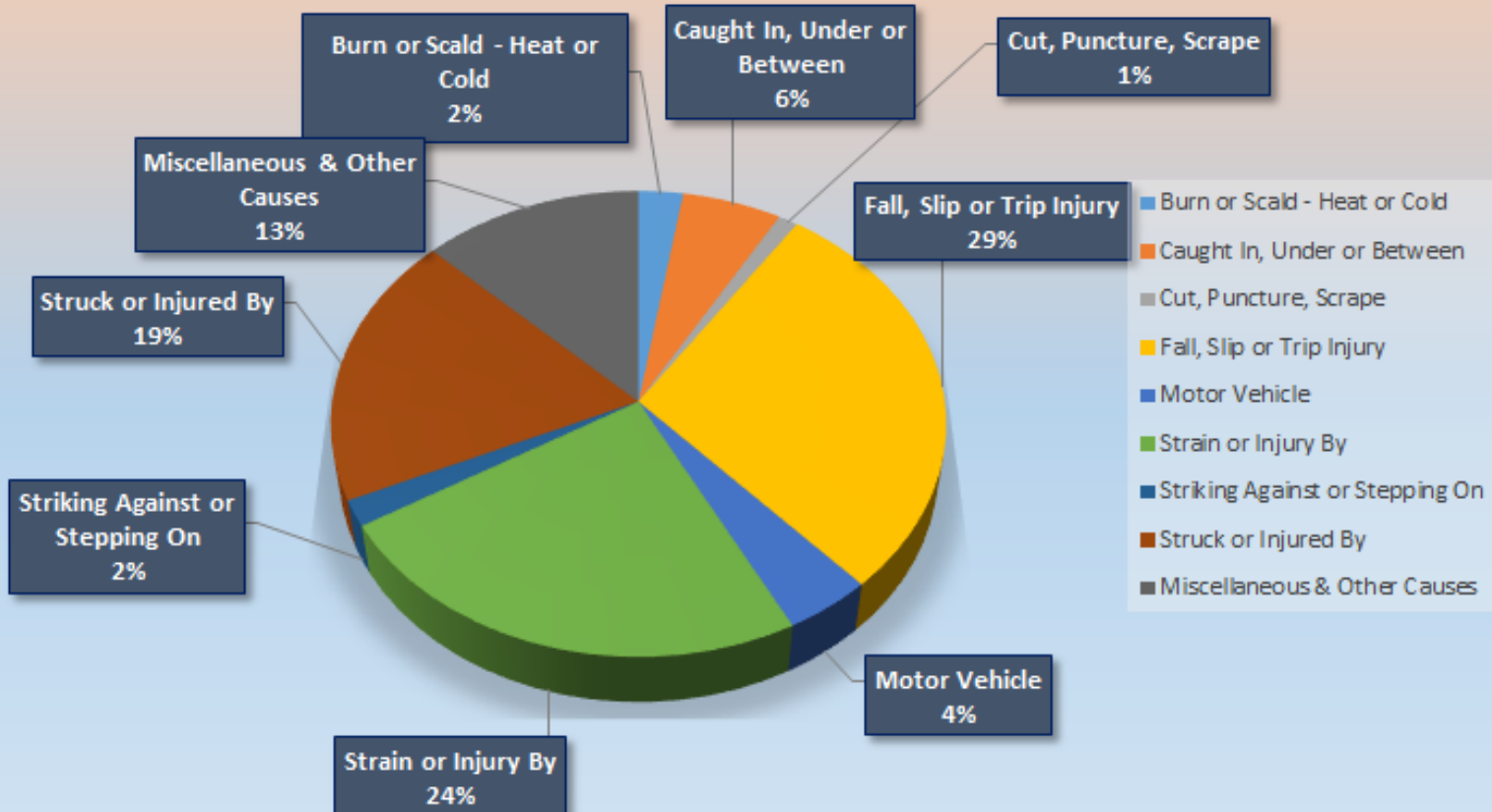
Total Workers' Compensation Premiums



The chart above shows total Workers' Compensation premiums written in the state, and demonstrates a clear downward trend since the institution of reforms beginning February 1, 2014.



Commission Filings Distributed by Cause of Injury



The pie chart above shows Commission filings in 2021 distributed by cause of injury. The “cause” of the injury describes the actual event or object that led to the injury.



Oklahoma Administrative Workers' Compensation Act: Maximum Weekly Compensation Rates

Injury/Death Date	TTD ¹	PPD ²	PTD ³	Death ⁴
1/1/2022 - 12/31/22	\$953.18	\$360	\$953.18	See Footnote 4
7/1/21 - 12/31/21	\$923.53	\$360	\$923.53	See footnote 4
1/1/21 - 6/30/21	\$923.53	\$350	\$923.53	See footnote 4
1/1/20 - 12/31/20	\$898.63	\$350	\$898.63	See footnote 4
5/28/19 - 12/31/19 ⁶	\$867.71	\$350	\$867.71	See footnote 4
1/1/19 - 5/27/19	\$607.40	\$323	\$867.71	See footnote 4
11/01/17 - 12/31/18 ⁵	\$590.63	\$323	\$843.75	See footnote 4
11/01/16 - 10/31/17	\$596.03	\$323	\$851.47	See footnote 4
11/01/15 - 10/31/16	\$589.33	\$323	\$841.90	See footnote 4
11/01/14 - 10/31/15	\$571.55	\$323	\$816.50	See footnote 4
02/01/14 - 10/31/14	\$561.00	\$323	\$801.00	See footnote 4

¹Temporary total disability was previously 70% of the employee's average weekly wage, not to exceed 70% of the state's average weekly wage. Upon the effective date of HB2367, it became 70% of employee's average weekly wage, not to exceed 100% of the state's average weekly wage.

² Permanent partial disability was 70% of the employee's average weekly wage, not to exceed \$323 per week. Upon the effective date of HB2367, the PPD limit was increased from \$323 per week to \$350 per week, and \$360 per week effective July 1, 2021.

³ Permanent total disability is 70% of the employee's average weekly wage, not to exceed 100% of the state's average weekly wage

⁴ The maximum aggregate weekly benefits payable to all beneficiaries shall not exceed 100% of the average weekly wage of the deceased employee or 100% of the state's average weekly wage, whichever is less.

⁵The Workers' Compensation Commission determined on 10/18/19 that 85A O.S. §2(24) requires that the effective date of the average weekly wage is January 1 of the year following the determination of the rate by the Oklahoma Employment Security Commission, rather than November 1 of the prior year. For example, the rate for 2019 becomes effective January 1, 2019, rather than November 1, 2018.

⁶ The Temporary Total Disability rate was amended to 70% of the employee's average weekly wage, not to exceed 100% of the state's average weekly wage, by HB2367, effective May 29, 2019.



APPENDIX 2 - WORKERS' COMPENSATION PREMIUM WRITTEN IN OKLAHOMA

Company Name	Premium Written
Compsource Mut Ins Co	\$ 200,143,525.00
Zurich Amer Ins Co	\$ 16,130,545.00
National Amer Ins Co	\$ 15,323,000.00
Travelers Ind Co Of Amer	\$ 10,312,820.00
Stonetrust Commercial Ins Co	\$ 8,759,194.00
Arch Ins Co	\$ 8,457,395.00
Zenith Ins Co	\$ 8,451,555.00
BITCO Gen Ins Corp	\$ 7,797,376.00
Technology Ins Co Inc	\$ 7,327,304.00
Accident Fund Ins Co of Amer	\$ 7,263,195.00
Security Natl Ins Co	\$ 6,821,387.00
American Interstate Ins Co	\$ 6,619,487.00
Charter Oak Fire Ins Co	\$ 6,540,032.00
Ohio Security Ins Co	\$ 6,287,556.00
Sentinel Ins Co Ltd	\$ 6,084,242.00
Twin City Fire Ins Co Co	\$ 5,901,953.00
Great Amer Alliance Ins Co	\$ 5,799,469.00
AmTrust Ins Co	\$ 5,769,395.00
Travelers Cas Ins Co Of Amer	\$ 5,667,642.00
Indemnity Ins Co Of North Amer	\$ 5,611,894.00
Insurance Co Of The West	\$ 5,565,923.00
Travelers Prop Cas Co Of Amer	\$ 5,044,171.00
Trumbull Ins Co	\$ 4,993,876.00
Accident Fund Gen Ins Co	\$ 4,641,356.00
AIU Ins Co	\$ 4,422,628.00
Travelers Ind Co	\$ 4,377,240.00
Valley Forge Ins Co	\$ 4,203,977.00
Federated Mut Ins Co	\$ 4,029,589.00
Standard Fire Ins Co	\$ 3,997,784.00
Ace Amer Ins Co	\$ 3,945,689.00
Berkshire Hathaway Homestate Ins Co	\$ 3,870,349.00
Farmington Cas Co	\$ 3,640,743.00
Starr Ind & Liab Co	\$ 3,378,058.00
Phoenix Ins Co	\$ 3,348,979.00
Liberty Ins Corp	\$ 3,295,416.00
Federal Ins Co	\$ 3,212,596.00
Old Glory Ins Co	\$ 3,189,843.00



APPENDIX 2 - WORKERS' COMPENSATION PREMIUM WRITTEN IN OKLAHOMA

Company Name	Premium Written
Hartford Fire Ins Co	\$ 3,163,900.00
American Zurich Ins Co	\$ 3,154,405.00
Accident Fund Natl Ins Co	\$ 3,101,552.00
Old Republic Ins Co	\$ 3,071,969.00
Hartford Cas Ins Co	\$ 3,039,779.00
State Farm Fire & Cas Co	\$ 2,915,202.00
Hartford Ins Co Of The Midwest	\$ 2,851,955.00
Argonaut Ins Co	\$ 2,781,278.00
Hartford Underwriters Ins Co	\$ 2,763,013.00
Zurich Amer Ins Co Of IL	\$ 2,604,604.00
Fire Ins Exch	\$ 2,515,795.00
Employers Mut Cas Co	\$ 2,468,351.00
National Fire Ins Co Of Hartford	\$ 2,319,377.00
Liberty Mut Fire Ins Co	\$ 2,299,320.00
Wesco Ins Co	\$ 2,296,784.00
Nationwide Agribusiness Ins Co	\$ 2,256,335.00
American Cas Co Of Reading PA	\$ 2,221,692.00
Travelers Cas & Surety Co	\$ 2,142,883.00
Employers Preferred Ins Co	\$ 2,099,208.00
Sentry Cas Co	\$ 2,054,657.00
Transportation Ins Co	\$ 2,002,381.00
Emcasco Ins Co	\$ 1,985,843.00
Hartford Accident & Ind Co	\$ 1,923,068.00
Chubb Ind Ins Co	\$ 1,859,552.00
Berkley Regional Ins Co	\$ 1,772,262.00
Sequoia Ins Co	\$ 1,765,657.00
BITCO Natl Ins Co	\$ 1,758,444.00
Chubb Natl Ins Co	\$ 1,745,730.00
Midwest Builders Cas Mut Co	\$ 1,724,752.00
Travelers Ind Co Of CT	\$ 1,706,203.00
Markel Ins Co	\$ 1,705,871.00
Employers Ins Co of Wausau	\$ 1,675,908.00
Milford Cas Ins Co	\$ 1,665,787.00



APPENDIX 2 - WORKERS' COMPENSATION PREMIUM WRITTEN IN OKLAHOMA

Company Name	Premium Written
Granite State Ins Co	\$ 1,659,522.00
Norguard Ins Co	\$ 1,591,376.00
Service Amer Ind Co	\$ 1,583,912.00
Great West Cas Co	\$ 1,553,245.00
Continental Cas Co	\$ 1,508,366.00
Church Mut Ins Co S I	\$ 1,504,357.00
Clear Spring Prop & Cas Co	\$ 1,469,132.00
Triangle Ins Co Inc	\$ 1,456,985.00
LM Ins Corp	\$ 1,433,342.00
Carolina Cas Ins Co	\$ 1,429,898.00
Amerisure Mut Ins Co	\$ 1,424,595.00
Mid Century Ins Co	\$ 1,385,897.00
Redwood Fire & Cas Ins Co	\$ 1,380,572.00
United WI Ins Co	\$ 1,360,287.00
Brotherhood Mut Ins Co	\$ 1,358,991.00
Pennsylvania Manufacturers Assoc Ins	\$ 1,345,008.00
New Hampshire Ins Co	\$ 1,338,958.00
Safety Natl Cas Corp	\$ 1,311,203.00
SiriusPoint Amer Ins Co	\$ 1,307,388.00
Federated Reserve Ins Co	\$ 1,292,790.00
Property & Cas Ins Co Of Hartford	\$ 1,278,532.00
Praetorian Ins Co	\$ 1,250,257.00
Firemens Ins Co Of Washington DC	\$ 1,247,303.00
Continental Ins Co	\$ 1,235,036.00
Benchmark Ins Co	\$ 1,231,112.00
XL Ins Amer Inc	\$ 1,192,344.00
National Liab & Fire Ins Co	\$ 1,165,147.00
Berkley Natl Ins Co	\$ 1,148,571.00
Firstcomp Ins Co	\$ 1,119,907.00
Horizon Midwest Cas Co	\$ 1,092,145.00
Federated Serv Ins Co	\$ 1,069,894.00
Sentry Ins Co	\$ 1,053,447.00
XL Specialty Ins Co	\$ 1,052,800.00



APPENDIX 2 - WORKERS' COMPENSATION PREMIUM WRITTEN IN OKLAHOMA

Company Name	Premium Written
National Cas Co	\$ 999,271.00
Berkshire Hathaway Direct Ins Co	\$ 976,307.00
Vanliner Ins Co	\$ 970,222.00
Triumphe Cas Co	\$ 940,194.00
Grain Dealers Mut Ins Co	\$ 931,727.00
State Natl Ins Co Inc	\$ 920,825.00
Executive Risk Ind Inc	\$ 888,617.00
Acadia Ins Co	\$ 858,158.00
Truck Ins Exch	\$ 850,862.00
LUBA Cas Ins Co	\$ 846,494.00
Protective Ins Co	\$ 838,137.00
Manufacturers Alliance Ins Co	\$ 824,947.00
Tri State Ins Co Of MN	\$ 800,392.00
Midwest Ins Co	\$ 779,974.00
Westport Ins Corp	\$ 755,441.00
American Fire & Cas Co	\$ 753,625.00
Pharmacists Mut Ins Co	\$ 752,597.00
General Cas Co Of WI	\$ 747,021.00
Insurance Co Of The State Of PA	\$ 743,008.00
Regent Ins Co	\$ 720,837.00
Incline Cas Co	\$ 718,049.00
Rural Trust Ins Co	\$ 710,518.00
GuideOne Ins Co	\$ 695,216.00
Great Amer Assur Co	\$ 679,168.00
Amguard Ins Co	\$ 671,902.00
StarStone Natl Ins Co	\$ 641,942.00
Great Amer Spirit Ins Co	\$ 636,808.00
Farmers Ins Exch	\$ 615,738.00
First Liberty Ins Corp	\$ 597,225.00
Imperium Ins Co	\$ 575,913.00
QBE Ins Corp	\$ 551,723.00
Everest Natl Ins Co	\$ 547,085.00
Bridgefield Cas Ins Co	\$ 541,327.00



APPENDIX 2 - WORKERS' COMPENSATION PREMIUM WRITTEN IN OKLAHOMA

Company Name	Premium Written
The Cincinnati Cas Co	\$ 534,204.00
Continental Ind Co	\$ 520,046.00
Crum & Forster Ind Co	\$ 508,673.00
Employers Assur Co	\$ 497,977.00
Starr Specialty Ins Co	\$ 490,207.00
National Specialty Ins Co	\$ 490,095.00
United States Fire Ins Co	\$ 472,280.00
State Auto Prop & Cas Ins Co	\$ 463,418.00
Amerisure Ins Co	\$ 451,279.00
Cherokee Ins Co	\$ 450,557.00
Pacific Ind Co	\$ 448,841.00
Normandy Ins Co	\$ 442,792.00
Argonaut Midwest Ins Co	\$ 441,233.00
Commerce & Industry Ins Co	\$ 432,010.00
Union Ins Co	\$ 420,791.00
West Amer Ins Co	\$ 400,026.00
Everest Premier Ins Co	\$ 389,514.00
Sompo Amer Ins Co	\$ 385,858.00
New York Marine & Gen Ins Co	\$ 378,781.00
Starnet Ins Co	\$ 369,192.00
Meridian Security Ins Co	\$ 353,309.00
Nova Cas Co	\$ 344,795.00
Tokio Marine Amer Ins Co	\$ 322,398.00
Association Cas Ins Co	\$ 310,868.00
Allmerica Fin Benefit Ins Co	\$ 302,153.00
Electric Ins Co	\$ 295,752.00
Rockwood Cas Ins Co	\$ 279,668.00
Intrepid Ins Co	\$ 275,854.00
Great Northern Ins Co	\$ 264,675.00
Emc Prop & Cas Ins Co	\$ 263,175.00
Gray Ins Co	\$ 252,311.00
Accident Ins Co Inc	\$ 244,722.00
Arch Ind Ins Co	\$ 241,195.00



APPENDIX 2 - WORKERS' COMPENSATION PREMIUM WRITTEN IN OKLAHOMA

Company Name	Premium Written
Mitsui Sumitomo Ins USA Inc	\$ 239,403.00
Midwest Employers Cas Co	\$ 238,455.00
The Cincinnati Ind Co	\$ 235,287.00
Great Divide Ins Co	\$ 235,090.00
American Liberty Ins Co	\$ 233,164.00
Hanover Amer Ins Co	\$ 232,937.00
WCF Natl Ins Co	\$ 220,099.00
Continental Western Ins Co	\$ 219,133.00
Sentry Select Ins Co	\$ 217,215.00
Columbia Mut Ins Co	\$ 215,670.00
Bankers Standard Ins Co	\$ 215,582.00
Union Ins Co Of Providence	\$ 209,423.00
West Bend Mut Ins Co	\$ 192,821.00
Bearing Midwest Cas Co	\$ 191,928.00
Atlantic Specialty Ins Co	\$ 189,626.00
RLI Ins Co	\$ 187,609.00
Crestbrook Ins Co	\$ 177,748.00
Everest Denali Ins Co	\$ 171,231.00
HDI Global Ins Co	\$ 170,825.00
Florists Mut Ins Co	\$ 165,098.00
North Pointe Ins Co	\$ 164,215.00
North River Ins Co	\$ 163,194.00
Dakota Truck Underwriters	\$ 160,017.00
Cimarron Ins Co Inc	\$ 155,792.00
Central Mut Ins Co	\$ 148,527.00
Petroleum Cas Co	\$ 147,981.00
American Guar & Liab Ins	\$ 144,066.00
Ohio Cas Ins Co	\$ 139,296.00
MEMIC Ind Co	\$ 133,981.00
Wellfleet NY Ins Co	\$ 131,857.00
Sompo Amer Fire & Mar Ins Co Amer	\$ 128,617.00
Vigilant Ins Co	\$ 128,031.00
Federated Rural Electric Ins Exch	\$ 125,013.00



APPENDIX 2 - WORKERS' COMPENSATION PREMIUM WRITTEN IN OKLAHOMA

Company Name	Premium Written
Massachusetts Bay Ins Co	\$ 121,018.00
Employers Compensation Ins Co	\$ 119,866.00
Hanover Ins Co	\$ 119,217.00
Oak River Ins Co	\$ 117,709.00
OBI Natl Ins Co	\$ 117,568.00
Star Ins Co	\$ 117,412.00
Service Lloyds Ins Co	\$ 113,546.00
American Natl Prop & Cas Co	\$ 112,164.00
Eastguard Ins Co	\$ 95,888.00
American Automobile Ins Co	\$ 95,544.00
Alaska Natl Ins Co	\$ 90,533.00
Ace Prop & Cas Ins Co	\$ 88,863.00
Amerisure Partners Ins Co	\$ 85,287.00
Middlesex Ins Co	\$ 84,574.00
Columbia Natl Ins Co	\$ 82,366.00
National Interstate Ins Co	\$ 81,624.00
Ace Fire Underwriters Ins Co	\$ 80,262.00
Sagamore Ins Co	\$ 78,045.00
SUNZ Ins Co	\$ 67,947.00
Frank Winston Crum Ins Co	\$ 64,615.00
Westfield Ins Co	\$ 60,947.00
T H E Ins Co	\$ 58,509.00
Transverse Ins Co	\$ 55,955.00
ACIG Ins Co	\$ 54,891.00
MAG Mut Ins Co	\$ 54,311.00
Berkley Cas Co	\$ 50,919.00
National Surety Corp	\$ 50,357.00
MidSouth Mut Ins Co	\$ 48,727.00
Mitsui Sumitomo Ins Co of Amer	\$ 43,918.00
AIG Prop Cas Co	\$ 43,432.00
Retailers Cas Ins Co	\$ 42,002.00
LUBA Ind Ins Co	\$ 41,935.00
Transguard Ins Co Of Amer Inc	\$ 41,086.00



APPENDIX 2 - WORKERS' COMPENSATION PREMIUM WRITTEN IN OKLAHOMA

Company Name	Premium Written
Pennsylvania Manufacturers Ind Co	\$ 37,280.00
Stonington Ins Co	\$ 34,789.00
Clarendon Natl Ins Co	\$ 34,101.00
The Cincinnati Ins Co	\$ 32,068.00
Key Risk Ins Co	\$ 28,754.00
Firemans Fund Ins Co	\$ 28,503.00
American Builders Ins Co	\$ 26,843.00
Wellfleet Ins Co	\$ 26,463.00
Goodville Mut Cas Co	\$ 26,305.00
SFM Mut Ins Co	\$ 25,903.00
Citizens Ins Co Of Amer	\$ 25,396.00
Bridgefield Employers Ins Co	\$ 22,772.00
First Dakota Ind Co	\$ 22,468.00
OBI Amer Ins Co	\$ 22,183.00
Lion Ins Co	\$ 20,364.00
Allmerica Fin Alliance Ins Co	\$ 17,945.00
FCCI Ins Co	\$ 16,566.00
Guideone Elite Ins Co	\$ 16,211.00
Great Amer Ins Co	\$ 15,964.00
Work First Cas Co	\$ 15,240.00
State Automobile Mut Ins Co	\$ 14,688.00
Great Amer Ins Co of NY	\$ 10,114.00
Employers Ins Co Of NV	\$ 8,521.00
Utica Mut Ins Co	\$ 6,398.00
Westfield Natl Ins Co	\$ 5,115.00
All Amer Ins Co	\$ 3,817.00
Samsung Fire & Marine Ins Co Ltd	\$ 3,375.00
Employers Natl Ins Co Inc	\$ 3,031.00
National Trust Ins Co	\$ 2,670.00
TNUS Ins Co	\$ 2,484.00
Trans Pacific Ins Co	\$ 2,089.00
Chiron Ins Co	\$ 959.00
Wausau Underwriters Ins Co	\$ 956.00



APPENDIX 2 - WORKERS' COMPENSATION PREMIUM WRITTEN IN OKLAHOMA

Company Name	Premium Written
Riverport Ins Co	\$ 882.00
Monroe Guar Ins Co	\$ 512.00
GuideOne Specialty Ins Co	\$ 311.00
United States Fidelity & Guar Co	\$ 202.00
MEMIC Cas Co	\$ 199.00
Nutmeg Ins Co	\$ 56.00
Liberty Mut Ins Co	\$ 33.00
Netherlands Ins Co The	\$ 30.00
Preferred Professional Ins Co	\$ (64.00)
Silver Oak Cas Inc	\$ (69.00)
American Family Home Ins Co	\$ (145.00)
Illinois Natl Ins Co	\$ (190.00)
Fidelity & Guar Ins Co	\$ (357.00)
American Compensation Ins Co	\$ (1,792.00)
Nationwide Mut Ins Co	\$ (3,098.00)
AIG Assur Co	\$ (13,061.00)
Pacific Employers Ins Co	\$ (16,011.00)
American Home Assur Co	\$ (21,023.00)
Safety First Ins Co	\$ (36,126.00)
7710 Ins Co	\$ (130,369.00)
Greenwich Ins Co	\$ (146,514.00)
Old Republic Gen Ins Corp	\$ (175,203.00)
Great Midwest Ins Co	\$ (261,227.00)
National Union Fire Ins Co Of Pitts	\$ (329,303.00)
Total	\$ 585,330,914.00



APPENDIX 3 - Filings by Part of Body, Distributed by Gender

Part of Body Affected	Total		Gender of Injured or Ill Worker					
	Number	Percent	Male		Female		Unknown	
			Number	Percent	Number	Percent	Number	Percent
Abdomen	88	0.56%	66	0.68%	22	0.36%		0.00%
Ankle Left	145	0.91%	85	0.87%	59	0.97%	1	12.50%
Ankle Right	173	1.09%	106	1.08%	67	1.10%		0.00%
Ankle UNS	6	0.04%	3	0.03%	3	0.05%		0.00%
Ankle Both	16	0.10%	10	0.10%	6	0.10%		0.00%
Arm Left	409	2.58%	251	2.57%	158	2.60%		0.00%
Arm Right	497	3.14%	289	2.96%	208	3.43%		0.00%
Arm UNS	6	0.04%	5	0.05%	1	0.02%		0.00%
Arm Upper Left	19	0.12%	15	0.15%	4	0.07%		0.00%
Arm Upper Right	23	0.15%	17	0.17%	6	0.10%		0.00%
Arm Upper UNS	1	0.01%	1	0.01%	-	0.00%		0.00%
Arms both	243	1.53%	135	1.38%	108	1.78%		0.00%
Arms Upper Both	4	0.03%	2	0.02%	2	0.03%		0.00%
Back Lower	979	6.18%	600	6.14%	377	6.21%	2	25.00%
Back Middle	181	1.14%	111	1.14%	70	1.15%		0.00%
Back UNS	935	5.90%	582	5.95%	353	5.82%		0.00%
Back Upper	274	1.73%	162	1.66%	112	1.85%	-	0.00%
Body Parts UNS	19	0.12%	14	0.14%	5	0.08%	-	0.00%
Body System	25	0.16%	17	0.17%	8	0.13%		0.00%
Brain	107	0.68%	68	0.70%	39	0.64%		0.00%
Chest	237	1.50%	176	1.80%	61	1.01%		0.00%
Circulatory System	43	0.27%	29	0.30%	14	0.23%		0.00%
Digestive System	9	0.06%	6	0.06%	3	0.05%		0.00%
Ear Inside Left	2	0.01%	2	0.02%	-	0.00%		0.00%
Ear Inside Right	2	0.01%	-	0.00%	2	0.03%		0.00%
Ear Inside Uns	4	0.03%	3	0.03%	1	0.02%		0.00%
Ear Outside Both	2	0.01%	1	0.01%	1	0.02%		0.00%
Ear Outside Left	8	0.05%	6	0.06%	2	0.03%		0.00%
Ears Outside Right	11	0.07%	7	0.07%	4	0.07%		0.00%
Ears Inside Both	54	0.34%	50	0.51%	4	0.07%		0.00%
Ears Outside UNS	-	0.00%	-	0.00%	-	0.00%		0.00%
Ears UNS	16	0.10%	12	0.12%	4	0.07%		0.00%
Elbow Left	153	0.97%	94	0.96%	59	0.97%		0.00%
Elbow Right	171	1.08%	108	1.10%	63	1.04%		0.00%
Elbows UNS	6	0.04%	3	0.03%	3	0.05%		0.00%



APPENDIX 3 - Filings by Part of Body, Distributed by Gender

Part of Body Affected	Total		Gender of Injured or Ill Worker					
	Number	Percent	Male		Female		Unknown	
			Number	Percent	Number	Percent	Number	Percent
Elbows Both	48	0.30%	19	0.19%	29	0.48%		0.00%
Excretory System	50	0.32%	39	0.40%	11	0.18%		0.00%
Eye Left	47	0.30%	39	0.40%	8	0.13%		0.00%
Eye Right	35	0.22%	28	0.29%	7	0.12%		0.00%
Eye UNS	7	0.04%	6	0.06%	1	0.02%		0.00%
Eyes Both	46	0.29%	29	0.30%	17	0.28%		0.00%
Face UNS	104	0.66%	73	0.75%	31	0.51%		0.00%
Feet	141	0.89%	89	0.91%	52	0.86%		0.00%
Fingers	36	0.23%	20	0.20%	16	0.26%		0.00%
Fingers Left Hand	224	1.41%	173	1.77%	51	0.84%		0.00%
Fingers Right Hand	229	1.44%	160	1.64%	69	1.14%		0.00%
Foot Left	294	1.86%	196	2.01%	98	1.62%		0.00%
Foot Right	298	1.88%	186	1.90%	112	1.85%		0.00%
Foot UNS	2	0.01%	2	0.02%	-	0.00%		0.00%
Forearm Left	9	0.06%	7	0.07%	2	0.03%		0.00%
Forearm Right	14	0.09%	9	0.09%	5	0.08%		0.00%
Forearm UNS	-	0.00%	-	0.00%	-	0.00%		0.00%
Forearms Both	4	0.03%	3	0.03%	1	0.02%		0.00%
Hand Left	499	3.15%	305	3.12%	194	3.20%		0.00%
Hand Right	557	3.51%	330	3.38%	227	3.74%		0.00%
Hand UNS	11	0.07%	7	0.07%	4	0.07%		0.00%
Hands Both	400	2.52%	201	2.06%	199	3.28%		0.00%
Head	595	3.75%	366	3.74%	229	3.77%		0.00%
Hip UNS	34	0.21%	23	0.24%	11	0.18%		0.00%
Hip Left	204	1.29%	113	1.16%	91	1.50%		0.00%
Hip Right	230	1.45%	138	1.41%	92	1.52%		0.00%
Hips Both	238	1.50%	131	1.34%	106	1.75%	1	12.50%
Jaw	27	0.17%	15	0.15%	12	0.20%		0.00%
Knee Left	559	3.53%	362	3.70%	197	3.25%		0.00%
Knee Right	512	3.23%	308	3.15%	204	3.36%		0.00%
Knee UNS	11	0.07%	6	0.06%	5	0.08%		0.00%
Knees Both	190	1.20%	107	1.09%	83	1.37%		0.00%
Leg Left	349	2.20%	229	2.34%	120	1.98%		0.00%
Leg Lower Left	25	0.16%	20	0.20%	5	0.08%		0.00%
Leg Lower Right	20	0.13%	14	0.14%	6	0.10%		0.00%
Leg Lower UNS	-	0.00%	-	0.00%	-	0.00%		0.00%
Leg Right	367	2.32%	225	2.30%	142	2.34%		0.00%
Leg UNS	9	0.06%	4	0.04%	5	0.08%		0.00%
Legs Both	179	1.13%	113	1.16%	65	1.07%	1	12.50%



APPENDIX 3 - Filings by Part of Body, Distributed by Gender

Part of Body Affected	Total		Gender of Injured or Ill Worker					
	Number	Percent	Male		Female		Unknown	
			Number	Percent	Number	Percent	Number	Percent
Lower Body UNS	-	0.00%	-	0.00%	-	0.00%		0.00%
Mouth	58	0.37%	40	0.41%	18	0.30%		0.00%
Multiple Parts	41	0.26%	36	0.37%	5	0.08%		0.00%
Musculoskeletal	46	0.29%	25	0.26%	21	0.35%		0.00%
Neck	1141	7.20%	646	6.61%	495	8.16%		0.00%
Nervous system	10	0.06%	7	0.07%	3	0.05%		0.00%
Nonclassifiable	8	0.05%	4	0.04%	3	0.05%	1	12.50%
Nose	37	0.23%	21	0.21%	16	0.26%		0.00%
Other Systems	49	0.31%	38	0.39%	11	0.18%		0.00%
Psychological Overlay	89	0.56%	46	0.47%	43	0.71%	-	0.00%
Respiratory System	123	0.78%	90	0.92%	33	0.54%		0.00%
Scalp	5	0.03%	3	0.03%	2	0.03%		0.00%
Shoulder Left	826	5.21%	541	5.54%	284	4.68%	1	12.50%
Shoulder Right	1046	6.60%	652	6.67%	393	6.48%	1	12.50%
shoulder UNS	30	0.19%	18	0.18%	12	0.20%		0.00%
Shoulders Both	297	1.87%	180	1.84%	117	1.93%		0.00%
Side Left	11	0.07%	8	0.08%	3	0.05%		0.00%
Side Right	17	0.11%	12	0.12%	5	0.08%		0.00%
Side UNS	11	0.07%	5	0.05%	6	0.10%		0.00%
Skull	2	0.01%	1	0.01%	1	0.02%		0.00%
Thigh Left	12	0.08%	10	0.10%	2	0.03%		0.00%
Thigh Right	17	0.11%	10	0.10%	7	0.12%		0.00%
Thigh UNS	8	0.05%	6	0.06%	2	0.03%		0.00%
Thighs Both	5	0.03%	1	0.01%	4	0.07%		0.00%
Toes Left Foot	18	0.11%	12	0.12%	6	0.10%		0.00%
Toes Right Foot	25	0.16%	18	0.18%	7	0.12%		0.00%
Toes UNS	1	0.01%	1	0.01%	-	0.00%		0.00%
Trunk UNS	9	0.06%	6	0.06%	3	0.05%		0.00%
Upper Extremes UNS	10	0.06%	5	0.05%	5	0.08%		0.00%
Wrist Left	174	1.10%	85	0.87%	89	1.47%		0.00%
Wrist Right	186	1.17%	84	0.86%	102	1.68%		0.00%
Wrist UNS	3	0.02%	2	0.02%	1	0.02%		0.00%
Wrists Both	62	0.39%	30	0.31%	32	0.53%		0.00%
Totals	15849	100.00%	9774	100.00%	6067	100.00%	8	100.00%

2021 WCC Annual Report



APPENDIX 4 - FILINGS BY NATURE OF INJURY

Nature of Injury	Total		Gender					
	Number	Percent	Male		Female		Unknown	
			Number	Percent	Number	Percent	Number	Percent
AIDS	-	0.00%	-	0.00%	-	0.00%	-	0.00%
All Other Cumulative Injury, NOC	617	8.37%	353	7.45%	264	10.05%	-	0.00%
All Other Occupational Disease Injury, NOC	7	0.09%	5	0.11%	2	0.08%	-	0.00%
Amputation	60	0.81%	58	1.22%	2	0.08%	-	0.00%
Angina Pectoris	2	0.03%	2	0.04%	-	0.00%	-	0.00%
Asbestosis	1	0.01%	1	0.02%	-	0.00%	-	0.00%
Asphyxiation	1	0.01%	1	0.02%	-	0.00%	-	0.00%
Black Lung	-	0.00%	-	0.00%	-	0.00%	-	0.00%
Burn	71	0.96%	43	0.91%	28	1.07%	-	0.00%
Byssinosis	-	0.00%	-	0.00%	-	0.00%	-	0.00%
Cancer	1	0.01%	1	0.02%	-	0.00%	-	0.00%
Carpal Tunnel Syndrome	62	0.84%	24	0.51%	38	1.45%	-	0.00%
Concussion	35	0.47%	23	0.49%	12	0.46%	-	0.00%
Contagious Disease	61	0.83%	29	0.61%	32	1.22%	-	0.00%
Contusion	149	2.02%	84	1.77%	65	2.47%	-	0.00%
Crushing	108	1.46%	94	1.98%	14	0.53%	-	0.00%
Dermatitis	2	0.03%	2	0.04%	-	0.00%	-	0.00%
Dislocation	89	1.21%	64	1.35%	25	0.95%	-	0.00%
Dust Disease, NOC	-	0.00%	-	0.00%	-	0.00%	-	0.00%
Electric Shock	10	0.14%	9	0.19%	1	0.04%	-	0.00%
Enuclation	-	0.00%	-	0.00%	-	0.00%	-	0.00%
Foreign Body	6	0.08%	6	0.13%	-	0.00%	-	0.00%
Fracture	664	9.00%	439	9.26%	225	8.56%	-	0.00%
Freezing	2	0.03%	2	0.04%	-	0.00%	-	0.00%
Hearing Loss or Impairment	24	0.00%	20	0.42%	4	0.15%	-	0.00%
Heat Prostration	10	0.00%	7	0.15%	3	0.11%	-	0.00%
Hepatitis C	-	0.00%	-	0.00%	-	0.00%	-	0.00%
Hernia	41	0.56%	36	0.76%	5	0.19%	-	0.00%
Infection	11	0.15%	7	0.15%	4	0.15%	-	0.00%
Inflamation	48	0.65%	36	0.76%	12	0.46%	-	0.00%
Laceration	183	2.48%	156	3.29%	27	1.03%	-	0.00%
Loss of Hearing	2	0.03%	2	0.04%	-	0.00%	-	0.00%
Mental Disorder	-	0.00%	-	0.00%	-	0.00%	-	0.00%
Mental Stress	5	0.07%	2	0.04%	3	0.11%	-	0.00%
Multiple Injuries Including Both Physical and Psychological	3	0.04%	1	0.02%	2	0.08%	-	0.00%
Multiple Physical Injuries Only	61	0.83%	43	0.91%	18	0.68%	-	0.00%
Myocardial Infarction	4	0.05%	3	0.06%	1	0.04%	-	0.00%
No Physical Injury	6	0.08%	3	0.06%	2	0.08%	1	14.29%
Other	3478	47.17%	2178	45.96%	1297	49.35%	3	42.86%
Poisoning - Chemical, (Other Than Metals)	3	0.04%	3	0.06%	-	0.00%	-	0.00%
Poisoning - General (Not OD or Cumulative Injury)	-	0.00%	-	0.00%	-	0.00%	-	0.00%
Poisoning - Metal	-	0.00%	-	0.00%	-	0.00%	-	0.00%
Puncture	30	0.41%	20	0.42%	10	0.38%	-	0.00%
Radiation	1	0.01%	1	0.02%	-	0.00%	-	0.00%
Respiratory Disorders	4	0.05%	4	0.08%	-	0.00%	-	0.00%
Rupture	263	3.57%	172	3.63%	90	3.42%	1	14.29%
Severance	6	0.08%	6	0.13%	-	0.00%	-	0.00%
Silicosis	-	0.00%	-	0.00%	-	0.00%	-	0.00%
Sprain or Tear (Joint)	450	6.10%	279	5.89%	171	6.51%	-	0.00%
Strain or Tear (Muscle)	783	10.62%	511	10.78%	270	10.27%	2	28.57%
Syncope	1	0.01%	1	0.02%	-	0.00%	-	0.00%
VDT - Related Diseases	1	0.01%	1	0.02%	-	0.00%	-	0.00%
Vascular	1	0.01%	1	0.02%	-	0.00%	-	0.00%
Vision Loss	7	0.09%	6	0.13%	1	0.04%	-	0.00%
TOTAL	7374	100.00%	4739	100.00%	2628	100.00%	7	100.00%

2021 WCC Annual Report



APPENDIX 4 - Filings by Cause of Injury, Distributed by Gender

Injury Cause	Total		Gender					
	Number	Percent	Male		Female		Unknown	
			Number	Percent	Number	Percent	Number	Percent
Burn or Scald - Heat or Cold	186	2.56%	117	2.51%	69	2.66%	-	0.00%
Chemicals	24	0.33%	16	0.34%	8	0.31%	-	0.00%
Contact, Hot Object or Substances	23	0.32%	12	0.26%	11	0.42%	-	0.00%
Cold Objects or Substances	3	0.04%	3	0.06%	-	0.00%	-	0.00%
Temperature Extremes	11	0.15%	11	0.24%	-	0.00%	-	0.00%
Fire or Flame	14	0.19%	12	0.26%	2	0.08%	-	0.00%
Steam or Hot Fluids	9	0.12%	2	0.04%	7	0.27%	-	0.00%
Dust, Gases, Fumes	12	0.17%	10	0.21%	2	0.08%	-	0.00%
Welding Operations	1	0.01%	1	0.02%	-	0.00%	-	0.00%
Radiation	-	0.00%	-	0.00%	-	0.00%	-	0.00%
Abnormal Air Pressure	3	0.04%	1	0.02%	2	0.08%	-	0.00%
Electrical Current	12	0.17%	11	0.24%	1	0.04%	-	0.00%
Contact with NOC	74	1.02%	38	0.81%	36	1.39%	-	0.00%
Caught In, Under or Between	417	5.74%	322	6.91%	94	3.62%	1	0.04%
Machinery	87	1.20%	74	1.59%	12	0.46%	1	16.67%
Object Handled	136	1.87%	100	2.14%	36	1.39%	-	0.00%
Collapsing Materials	8	0.11%	6	0.13%	2	0.08%	0	0.00%
Caught In/Between NOC	186	2.56%	142	3.05%	44	1.70%	-	0.00%
Cut, Puncture, Scrape	82	1.13%	72	1.54%	10	0.39%	-	0.00%
Cut/Scrape by Broken Glass	2	0.03%	2	0.04%	-	0.00%	-	-
Hand Tool, Not Powered	20	0.28%	14	0.30%	6	0.23%	-	-
Object Being Lifted or Handled	-	0.00%	-	0.00%	-	0.00%	-	-
Powered Hand Tool	25	0.34%	24	0.51%	1	0.04%	-	-
Cut/Puncture/Scrape NOC	35	0.48%	32	0.69%	3	0.12%	0	-
Fall, Slip or Trip Injury	2087	28.73%	1196	25.65%	890	34.30%	1	16.67%
Fall/Slip - Different Level	275	3.79%	231	4.95%	43	1.66%	1	100.00%
Fall/Slip - From Ladder, Scaffold	182	2.51%	145	3.11%	37	1.43%	-	0.00%
Fall/Slip - From Liquid Grease Spills	113	1.56%	38	0.81%	75	2.89%	-	0.00%
Fall/Slip - Into Opening	57	0.78%	42	0.90%	15	0.58%	-	0.00%
Fall/Slip - On Same Level	196	2.70%	83	1.78%	113	4.35%	-	0.00%
Slipped, Did not Fall	38	0.52%	26	0.56%	12	0.46%	-	0.00%
Fall/Slip - On Ice or Snow	203	2.79%	121	2.59%	82	3.16%	-	0.00%
Fall/Slip - On Stairs	99	1.36%	49	1.05%	50	1.93%	-	0.00%
Fall/Slip/Trip NOC	924	12.72%	461	9.89%	463	17.84%	-	0.00%
Motor Vehicle	307	4.23%	224	4.80%	83	3.20%	-	0.00%
Crash of Water Vehicle	-	0.00%	-	0.00%	-	0.00%	-	-
Crash of Rail Vehicle	-	0.00%	-	0.00%	-	0.00%	-	-
Motor Vehicle/Collision	248	2.44%	177	3.80%	71	2.74%	0	-
Fixed Object/Collision	7	0.07%	5	0.11%	2	0.08%	0	-
Airplane Crash	1	0.01%	1	0.02%	-	0.00%	-	-
Vehicle Upset	24	0.30%	22	0.47%	2	0.08%	-	-
Motor Vehicle NOC	27	0.26%	19	0.41%	8	0.31%	-	-
		0.00%		0.00%		0.00%	0	-



APPENDIX 4 - Filings by Cause of Injury, Distributed by Gender

Injury Cause	Total		Gender					
	Number	Percent	Male		Female		Unknown	
			Number	Percent	Number	Percent	Number	Percent
Strain or Injury By	1747	24.05%	1152	24.71%	593	22.85%	2	33.33%
Continual Noise	20	0.28%	18	0.39%	2	0.08%	-	0.00%
Twisting	146	2.01%	91	1.95%	55	2.12%	-	0.00%
Jumping	24	0.33%	19	0.41%	5	0.19%	0	0.00%
Holding or Carrying	46	0.63%	31	0.66%	15	0.58%		0.00%
Lifting	578	7.96%	394	8.45%	184	7.09%		0.00%
Pushing or Pulling	327	4.50%	206	4.42%	120	4.62%	1	50.00%
Reaching	81	1.12%	55	1.18%	26	1.00%		0.00%
Using Tool or Machine	59	0.81%	48	1.03%	11	0.42%		0.00%
Welding/Throwing	3	0.04%	1	0.02%	2	0.08%	0	0.00%
Repetitive Motion	276	3.80%	155	3.32%	121	4.66%		0.00%
Strain/Injury, NOC	187	2.57%	134	2.87%	52	2.00%	1	50.00%
Striking Against or Stepping On	131	1.80%	84	1.80%	47	1.81%	-	0.00%
Striking/Stepping on Moving Parts	5	0.07%	5	0.11%	-	0.00%	-	
Lifted/Handled Object	-	0.00%	-	0.00%	-	0.00%	-	
Sand, Scrap, Clean OPR	-	0.00%	-	0.00%	-	0.00%	0	-
Stationary Object	32	0.44%	20	0.43%	12	0.46%	-	
Step on Sharp Object	7	0.10%	6	0.13%	1	0.04%	-	
Strike Against/Step on, NOC	87	1.20%	53	1.14%	34	1.31%	-	
Struck or Injured By	1382	19.03%	915	19.62%	467	18.00%	-	0.00%
Person (Not in the Act of a Crime)	196	2.70%	78	1.67%	118	4.55%	-	0.00%
Struck/Injured by Falling Object	159	2.19%	125	2.68%	34	1.31%	-	
Hand Tool/Machine in Use	30	0.41%	27	0.58%	3	0.12%	-	
Motor Vehicle	82	1.13%	61	1.31%	21	0.81%	-	
Machine Moving Parts	35	0.48%	26	0.56%	9	0.35%	0	-
Lifted or Handled Object	443	6.10%	295	6.33%	148	5.70%	-	
Object Handled by Others	11	0.15%	9	0.19%	2	0.08%	0	-
Animal or Insect	77	1.06%	48	1.03%	29	1.12%	0	-
Gunshot	6	0.08%	4	0.09%	2	0.08%		
Explosion/Flare Back	20	0.28%	15	0.32%	5	0.19%	0	-
Struck/Injured by, NOC	323	4.45%	227	4.87%	96	3.70%	-	
Rubbed or Abraded by	2	0.03%	2	0.04%	-	0.00%	-	0.00%
Repetitive Motion	1	0.01%	1	0.02%		0.00%		0.00%
Rubbed/Abraded NOC	1	0.01%	1	0.02%		0.00%		0.00%
	-							
Miscellaneous Causes	923	12.71%	579	12.42%	342	13.18%	2	33.33%
Absorption/Ingestion/Inhalation, NOC	10	0.14%	6	0.13%	4	0.15%		0.00%
Foreign Body in Eye	13	0.18%	11	0.24%	2	0.08%		0.00%
Person (Criminal Act)	72	0.99%	48	1.03%	23	0.89%	1	16.67%
Other than Physical	5	0.07%	3	0.06%	2	0.08%		0.00%
Cumulative (All Others)	492	6.77%	274	5.88%	218	8.40%		0.00%
Other Misc. Causes	331	4.56%	237	5.08%	93	3.58%	1	16.67%
Mold	1	0.01%	1	0.02%	-	0.00%	-	
Totals	7264	100.55%	4663	64.19%	2595	35.72%	6	0.08%



APPENDIX 5 - FILINGS BY NAICS SUBSECTOR

Agriculture, Forestry, Fishing, Hunting	Count	Percent
Crop Production	26	0.47%
Animal Production and Aquaculture	37	0.67%
Forestry & Logging	8	0.14%
Fishing, Hunting, Trapping	30	0.54%
Support Activities for Agriculture & Forestry	3	0.05%
Subtotal	104	1.88%
Mining		
Mining	Count	Percent
Oil & gas Extraction	3	0.05%
Mining (except Oil & gas)	10	0.18%
Support Activities for Mining	104	1.88%
Subtotal	117	2.12%
Utilities		
Utilities	Count	Percent
Utilities	50	0.90%
Subtotal	50	0.90%
Construction		
Construction	Count	Percent
Construction of Buildings	107	1.94%
Heavy & Civil Engineering Construction	76	1.37%
Specialty Trade Contractors	359	6.49%
Subtotal	542	9.80%
Manufacturing		
Manufacturing	Count	Percent
Food Manufacturing	139	2.51%
Beverage & Tobacco Product	21	0.38%
Textile Mills	1	0.02%
Textile Product Mills	4	0.07%
Apparel Manufacturing	2	0.04%
Leather & Allied Product Manufacturing	1	0.02%
Wood Product Manufacturing	19	0.34%
Paper Manufacturing	29	0.52%
Printing & Related Support Activities	9	0.16%
Petroleum & Coal Products Manufacturing	8	0.14%
Chemical Manufacturing	25	0.45%



APPENDIX 5 - FILINGS BY NAICS SUBSECTOR

Plastics & Rubber Products Manufacturing	97	1.75%
Nonmetallic Mineral Product Manufacturing	51	0.92%
Primary Metal Manufacturing	29	0.52%
Fabricated Metal Product Manufacturing	106	1.92%
Machinery Manufacturing	116	2.10%
Computer & Electronic Product Manufacturing	12	0.22%
Electrical Equipment, Appliance & Component Manufacturing	7	0.13%
Transportation Equipment Manufacturing	90	1.63%
Furniture & Related Product Manufacturing	16	0.29%
Miscellaneous Manufacturing	27	14.63%
Subtotal	809	28.78%

Wholesale Trade	Count	Percent
Merchant Wholesalers, Durable Goods	111	2.01%
Merchant Wholesalers, Nondurable Goods	98	1.77%
Wholesale Electronic Markets, Agents & Brokers	11	0.20%
Subtotal	220	3.98%

Retail Trade	Count	Percent
Motor Vehicle & Parts Dealers	93	1.68%
Furniture & Home Appliance Stores	13	0.24%
Electronics & Appliance Stores	7	0.13%
Building Material, Garden Equipment & Supplies Dealers	69	1.25%
Food & Beverage Stores	127	2.30%
Health & Personal Care Stores	37	0.67%
Gasoline Stations	28	0.51%
Clothing & Clothing Accessories Stores	11	0.20%
Sporting Goods, Hobby, Book & Music Stores	103	1.86%
General Merchandise Stores	0	0.00%
Miscellaneous Store Retailers	40	0.72%
Non-store Retailers	18	0.33%
Subtotal		9.88%



APPENDIX 5 - FILINGS BY NAICS SUBSECTOR

Transportation & Warehousing	Count	Percent
Air Transportation	5	0.09%
Rail Transportation	1	0.02%
Water Transportation	0	0.00%
Truck Transportation	160	2.89%
Transit & Ground Passenger Transportation	14	0.25%
Pipeline Transportation	3	0.05%
Scenic & Sightseeing Transportation	0	0.00%
Support Activities for Transportation	88	1.59%
Postal Service	0	0.00%
Couriers & Messengers	128	2.32%
Warehousing & Storage	11	0.20%
Subtotal	410	7.42%

Information	Count	Percent
Publishing Industries (except internet)	4	0.07%
Motion Picture & Sound Recording Industries	3	0.05%
Broadcasting (except internet)	9	0.16%
Telecommunications	0	0.00%
Data Processing, Hosting and Related Services	0	0.00%
Other Information Services	1	0.02%
Subtotal	17	0.31%

Finance & Insurance	Count	Percent
Monetary Authorities-Central Bank	2	0.04%
Credit Intermediation & Related Activities	26	0.47%
Securities, Commodity Contracts, Other Financial Investments & Related Activities	3	0.05%
Insurance Carriers & Related Activities	22	0.40%
Funds, Trusts & Other Financial Vehicles	2	0.04%
Subtotal	55	0.99%



APPENDIX 5 - FILINGS BY NAICS SUBSECTOR

Real Estate, Rental & Leasing	Count	Percent
Real Estate	59	1.07%
Rental & Leasing Services	13	0.24%
Subtotal	72	1.30%
Professional, Scientific & Technical Services	Count	Percent
Professional, Scientific & Technical Services	91	1.65%
Subtotal	91	1.65%
Management of Companies & Enterprises	Count	Percent
Management of Companies & Enterprises	11	0.20%
Subtotal	11	0.20%
Administrative Support, Waste Management & Remediation Services	Count	Percent
Administrative & Support Services	382	6.91%
Waste Management & Remediation Services	28	0.51%
Subtotal	410	7.42%
Educational Services	Count	Percent
Educational Services	295	5.34%
Subtotal	295	5.34%
Health Care & Social Assistance	Count	Percent
Ambulatory health Care Services	192	3.47%
Hospitals	167	3.02%
Nursing & Residential Care Facilities	138	2.50%
Social Assistance	89	1.61%
Subtotal	586	10.60%



APPENDIX 5 - FILINGS BY NAICS SUBSECTOR

Arts, Entertainment & Recreation	Count	Percent
Performing Arts, Spectator Sports & Related Industries	19	0.34%
Museums, Historical Sites & Similar Institutions	0	0.00%
Amusement, Gambling & Recreation Industries	43	0.78%
Subtotal	62	1.12%
Accommodation & Food Services		
Accommodation & Food Services	Count	Percent
Accommodation	45	0.81%
Food Services & Drinking Places	205	3.71%
Subtotal	250	4.52%
Other services (Except Public Administration)		
Other services (Except Public Administration)	Count	Percent
Repair & Maintenance	70	1.27%
Personal & Laundry Services	34	0.61%
Religious, Grantmaking, Civic, Professional & Similar Organizations	31	0.56%
Private Households	0	0.00%
Subtotal	135	2.44%
Public Administration		
Public Administration	Count	Percent
Executive, Legislative & Other General Government Support	430	7.78%
Justice, Public Order & Safety Activities	269	4.87%
Administration of Human Resource Programs	12	0.22%
Administration of Environmental Quality Programs	12	0.22%
Administration of Housing Programs, Urban Planning & Community Development	8	0.14%
Administration of Economic Programs	14	0.25%
Space Research & Technology	0	0.00%
National Security & International Affairs	2	0.04%
Subtotal	747	13.51%
Nonclassifiable		
Nonclassifiable	Count	Percent
Nonclassifiable and invalid codes	0	0.00%
Subtotal	0	0.00%
TOTALS	5529	100%



APPENDIX 6 - ORDERS OF ADMINISTRATIVE LAW JUDGES

Order Type	Judge						Total
	Blodgett	Curtin	Egan	Inhofe	Lawyer	McMillin	
18 - Form 18	0	0	0	0	0	0	0
3C DISMISSAL OR DENIAL	3	2	3	6	4	2	20
Lifting Abeyance	0	0	2	0	1	0	3
HOLDING ABEYANCE	3	3	3	7	-	2	18
APPEAL DISMISS	0	0	0	0	1	1	2
APPEAL NUNC PRO TUNC	0	-	-	-	-	-	-
APPEAL AFF DECISION	4	2	4	8	1	2	21
APP AFF/PART DECISION	0	-	-	-	-	-	-
APP AFF/PART VAC/REM	0	0	0	0	0	0	0
APP AFF/PART VAC/PART	0	-	-	-	-	-	-
APPEAL JURISDICTION MATTERS	1	1	0	1	0	0	3
APPEAL CODE NEEDED BY WCC	0	-	-	-	-	-	-
APPEAL VACATED	0	0	0	0	0	0	0
APP VAC & REM DECISION	0	-	-	-	-	-	-
BRIEFING ORDER APPELLANT	1	0	0	5	1	0	7
CONTINUING MEDICAL MAINTENANCE	0	1	1	1	2	3	8
ORDER CERTIFYING TO DISTRICT	1	0	2	0	0	0	3
COC REOPEN BETTER	0	-	-	-	-	-	-
COMPENSABILITY	41	6	23	23	28	24	145
CONSOLIDATION & DELETION OF	0	1	-	-	-	4	5
CONSOLIDATION -ALL MATTERS	0	10	9	10	5	8	42
CONSOLIDATION-TRIAL ONLY	4	7	9	17	22	14	73
CONSOLIDATION DENIED	0	0	0	0	0	0	0
CHANGE OF PHYSICIAN-COURT	0	-	-	-	-	-	-
CHANGE OF PHYSICIAN	284	280	282	271	270	314	1701
DENIAL CONTINUING MEDICAL	6	12	1	5	12	19	55
DENY/BARRED	0	0	0	0	0	0	0
DENY COC WORSE	0	-	-	2	-	1	3
DENY DEATH BENEFITS	0	1	0	0	1	1	3
DEATH BENEFITS	4	8	6	4	6	5	33
DENIAL CHANGE BETTER	0	0	0	0	0	0	0
DEATH COMPENSABILITY	0	-	-	-	-	-	-
CLAIM DENIED	0	0	0	0	0	1	1
DENYING COMPENSABILITY	61	72	56	70	60	83	402
DENIED/BARRED	0	0	0	0	0	0	0
DENIAL COC WORSE	0	-	-	1	-	-	1
DENIAL DEATH BENEFITS	0	0	0	0	0	0	0
PAUPER STATUS DENIED	0	-	-	-	-	-	-
DI1M - Dismiss Claim (Comm Only)	0	0	0	0	2	1	3
DISMISS WITHOUT PREJUDICE	38	56	34	44	25	42	239
DISMISS WITH PREJUDICE	76	98	90	76	80	69	489
DISFIGUREMENT	2	0	0	1	1	2	6



APPENDIX 6 - ORDERS OF ADMINISTRATIVE LAW JUDGES

Order Type	Judge						Total
	Blodgett	Curtin	Egan	Inhofe	Lawyer	McMillin	
DISMISS CLAIM	0	-	1	-	1	-	2
DISMISS W/O PREJUDICE	0	11	0	0	0	5	16
RECUSE	0	5	-	1	-	-	6
DISMISS RESPONDENT PAYS	0	0	0	0	0	0	0
DISS - Dismiss Misc	0	-	-	-	-	-	-
DISMISS WITH PREJUDICE	0	0	0	1	0	0	1
AWARDING PPD & DISFIGUREMENT	1	1	2	3	8	1	16
ATTORNEY FEES	0	0	1	0	0	0	1
INS COMPLIANCE MISCELLANEOUS	0	-	-	-	1	2	3
INS COMPLIANCE PENALTY ASSESSED	37	2	5	5	3	37	89
JOINT PETITION	898	1336	787	821	935	790	5567
JOINT PETITION DEATH	2	5	0	1	1	1	10
JOINT PETITION REOPEN	33	64	36	24	52	30	239
JURISDICTION	1	0	1	1	1	5	9
JURISDICTION C	0	-	-	-	-	-	-
Jurisdiction Employee	0	0	1	0	0	2	3
CASE MANAGEMENT	10	4	5	3	1	10	33
MED CASE MGMT DEN	0	0	0	0	0	0	0
IME REQ BY AGREEMENT	49	42	70	73	67	39	340
IME REQ BY CLAIMANT	30	28	47	63	40	25	233
IME REQ BY COURT	13	13	3	23	17	18	87
IME DENIAL	0	2	0	1	0	0	3
IME MEDICAL EXAMINER	25	27	14	67	46	34	213
REVIEW RECORDS IN A DEATH CASE	0	0	0	0	0	0	0
MDIS - Mandate Dismissed	0	-	-	-	-	-	-
IME REQ BY RESPONDENT	43	33	45	74	52	49	296
IME SUPPLEMENTAL	0	-	-	-	-	-	-
MEDICAL TREATMENT	24	32	30	29	24	35	174
MEDICAL TREATMENT DENY	6	31	29	32	23	18	139
IME REQ BY UNKNOWN	9	14	5	15	13	7	63
IME RESCHEDULE APPT	0	-	-	-	-	-	-
FORM 19 ORDER	2	3	4	8	0	3	20
MED PAYMENT DENY	0	2	-	2	1	-	5
ORDER FOR MEDIATION	16	69	12	31	86	20	234
AGREED MEDIATION	153	120	194	129	85	140	821
MED PAYMENT MEDICAL PROVIDER	0	0	0	0	0	0	0
MED PAYMENT RESP PAYS	0	-	-	-	-	-	-
MIF PTD	7	18	27	35	10	20	117
MFAI - MIF Increase	0	-	-	1	-	-	1
MIF DENY PTD	7	4	4	5	2	7	29
MIF MISC	0	1	3	3	-	2	9
MISCELLANEOUS	101	127	107	101	113	134	683



APPENDIX 6 - ORDERS OF ADMINISTRATIVE LAW JUDGES

Order Type	Judge						Total
	Blodgett	Curtin	Egan	Inhofe	Lawyer	McMillin	
MVAC - Mandate Vacated	0	-	-	-	-	-	-
NUNC PRO TUNC IME	2	3	0	5	5	4	19
NUNC PRO TUNC SUPPLM	1	-	2	1	1	-	5
NUNC PRO TUNC	2	23	13	19	16	18	91
ORM - Own Risk Misc	0	-	-	-	-	-	-
OWN RISK PERMIT APPROVED	0	0	0	0	0	0	0
OWN RISK PERMIT DENIAL	0	-	-	-	-	-	-
OWN RISK PERMIT MISC	0	0	0	0	0	0	0
PARTY ADD	0	-	-	1	-	-	1
PAUPER STATUS GRANTED	0	5	0	0	16	0	21
DISMISSING PARTY	13	13	19	21	43	18	127
AWARDING PPD	27	50	50	87	0	43	257
PPD COMPENSABILITY	4	4	-	1	-	-	9
PPD DENIAL	0	0	0	1	0	2	3
PPDN - PPD & NE	1	-	-	-	-	-	1
PPD & TTD TOTAL COMPENSABILITY	0	0	0	0	0	1	1
PPD COC REOPEN WORSE	0	-	-	-	-	-	-
PPD & TTD COC REOPEN WORSE	0	0	0	0	0	0	0
PTD	1	2	2	3	3	7	18
PTD DENY	0	1	0	0	1	1	3
AWARDING PPD & PTD	0	-	-	-	-	-	-
PTD COC REOPEN WORSE	0	0	0	0	0	0	0
REMV - CLAIM CLOSED - QUALIFIED	0	-	-	-	-	-	-
TERM BENEFITS PURSUANT SEC 57	0	0	0	0	0	1	1
SUPPLEMENTAL ORDER	0	-	-	1	2	-	3
TERMINATE CONTINUING MEDICAL	0	1	0	2	0	1	4
TTD	9	15	19	30	20	26	119
TTD COMPENSABILITY	11	0	8	16	9	12	56
TTD OR TPD DENIAL	0	-	1	1	-	6	8
TTD TERMINATE	0	0	2	0	0	0	2
TTD COC REOPEN WORSE	0	-	-	-	-	-	-
EXTENSION OR ADD OF TTD	0	0	0	0	0	0	0
VACATE	2	7	3	3	5	3	23
VCM - Vacate Medical Case Management	0	0	1	0	0	0	1
VENUE CHANGE DENIED	0	-	-	-	-	-	-
VENUE CHANGE APPROVED	16	0	0	0	3	15	34
VACATE IME	1	1	-	2	2	2	8
VOC REHAB	0	0	0	0	1	2	3
VOC REHAB DENY	0	-	-	-	-	-	-
VOCATIONAL EXAMINATION	4	7	9	4	10	11	45
WITHDRAWAL ATTORNEY	101	176	146	20	29	123	595
XTENSION OF TIME	0	0	1	0	1	0	2
TOTAL	2191	2862	2234	2322	2271	2328	14208

2021 WCC Annual Report



APPENDIX 7 - ADMINISTRATIVE LAW JUDGE CASE SETTINGS

Set Type	Judge						
	Blodgett	Curtin	Egan	Inhofe	Lawyer	McMillin	TOTAL
PTD & PPD	7	16	10	16	17	19	85
PTD w/O PPD	30	37	52	63	13	28	223
PPD w/O PTD	273	316	294	305	320	288	1796
Death	12	13	16	7	11	12	71
TTD w/or w/o Misc. or Motions	645	601	653	539	529	636	3603
Misc.	1475	1578	1710	1627	1436	1650	9476
MIF	29	29	31	64	13	24	190
PHC	1283	1369	1465	1302	1204	1434	8057
OA	488	531	618	717	625	569	3548
Including TTD, PTD & PPD	3	7	4	12	10	10	46
Including TTD, PTD w/o PPD	3	12	9	8	1	8	41
Including TTD, PPD w/o PTD	132	139	124	99	148	147	789
Total	4380	4648	4986	4759	4327	4825	27925

APPENDIX 8 - ADMINISTRATIVE LAW JUDGE ORDER AVERAGES

Year 2021	Judge							AVERAGE	TOTAL
	Blodgett	Curtin	Egan	Inhofe	Lawyer	McMillin			
Total Orders Issued	2191	2862	2234	2322	2271	2328	2368.00	14208	
Total Insurance Compliance Penalties Assessed (ICPA)	\$ 235,123.00	\$ 7,820.00	\$ 34,155.00	\$ 29,000.00	\$ 6,500.00	\$ 242,413.00	\$ 92,501.83	\$ 555,011.00	
Total Orders Assessing Insurance Compliance Penalties (ICPA)	37	2	5	5	3	37	14.83333333	89	
Penalty Assessment Per Compliance Assessment Order	\$ 6,354.68	\$ 3,910.00	\$ 6,831.00	\$ 5,800.00	\$ 2,166.67	\$ 6,551.70	\$ 5,269.01	\$ 31,614.05	
Joint Petition Award Amount Total (JP + JPRO)	\$ 15,663,584.00	\$ 25,509,864.00	\$ 17,128,865.00	\$ 16,582,566.00	\$ 17,079,983.00	\$ 17,176,070.00	\$ 18,190,155.33	\$ 109,140,932.00	
Total Joint Petition Award Orders	929	1399	823	846	987	819	967.1666667	5803	
Joint Petition Award Per Joint Petition Order	\$ 16,860.69	\$ 18,234.36	\$ 20,812.72	\$ 19,601.14	\$ 17,304.95	\$ 20,972.00	\$ 18,964.31	\$ 113,785.86	
PPD Award Total (PPD+PPDC+DPPD+PPDT)	\$ 635,607.00	\$ 919,416.00	\$ 1,203,355.00	\$ 1,654,546.00	\$ 985,667.00	\$ 1,016,722.00	\$ 1,069,218.83	\$ 6,415,313.00	
Total Orders Awarding PPD (PPD+PPDC+DPPD+PPDT)	32	55	52	91	51	45	54.33333333	326	
PPD Award Amount per Order Awarding PPD	\$ 19,862.72	\$ 16,716.65	\$ 23,141.44	\$ 18,181.82	\$ 19,326.80	\$ 22,593.82	\$ 19,970.54	\$ 119,823.27	



APPENDIX 9 - WCC Fiscal Year 2021 Budget

ITEM	AMOUNT
General Operations:	
Salaries and Benefits	\$ 4,637,459
Contractual Services	\$ 185,743
Instate/Out-of-State Travel	\$ 10,848
Lease/Rent	\$ 203,202
Equipment and Machinery - Rental	\$ 9,069
Other Admin Costs	\$ 207,223
Refunds	\$ 11,294
Collections-Other Jurisdictions	\$ 67,498
Total	\$ 5,332,336
IT Ops:	
IT Contractual/System Design and Operations	\$ 1,132,000
IT Telecommunications and System Services	\$ 261,787
Equipment Rental	\$ 19,181
Data Processing Maintenance	\$ 159,794
Data Processing Equipment	\$ 472
Other IT Costs	\$ 14,295
Total	\$ 1,587,529
TOTAL FY2020	
	\$ 6,919,865